

# Motorized Filter Wheels

## High Speed Filter Wheel System

### Features

Visible filter position numbers for both the light path filter and the load position filter

Large selection of adapters to fit most illuminators

Filter wheels can be stacked together for ND filters

A dual track for better support

Filter wheel stand for added stability

The Prior Scientific filter wheel system can be provided as a stand alone unit or used in conjunction with stage and focus systems controlled via the Prior ProScan™II, PriorPCI<sup>2</sup>, or OptiScan™II stepper motor controllers.

Features of the Filter Wheel System include:

- The ability to mount on the illumination or emission side of the microscope
- Available for 25mm (10 position) or 32mm (8 position) filters
- A large selection of adapters to fit most illuminators
- Filter wheel position and shutter status are controlled via either RS232 or an optional keypad
- Filter wheels can be stacked together in series for ND filters
- Magnetic covers over the filter load position on both sides of the filter wheel for easy access to change filters
- Visible filter position numbers for both the light path filter and the load position filter
- Filter wheel stand for added stability
- Optional dual slide in neutral density filter holder

Prior Scientific products have an established reputation for quality and reliability. They are manufactured using high-quality components. For the filter wheel system and all its products, Prior provides support and service through an extensive network of knowledgeable, professional dealers.

# General Specifications

## Filter Wheels

10 position, 25mm filters  
8 position, 32mm filters

## Filter Wheel Speed

55ms between adjacent positions  
(120ms for OptiScan™II)

## Filter Wheel Weight

3.2 kg (7 lbs)

## Controller

Driven via ProScan™II, PriorPCI<sup>2</sup>  
or OptiScan™II Controller

## External Control

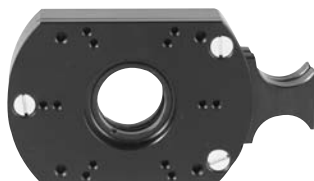
Optional Filter Wheel Keypad

\*Specifications subject to change  
without notice



## High Speed Shutters

The high speed shutter has a 40 Hz\* maximum frequency of operation. The shutter can be opened and closed completely in as little as 10 ms.



## Filter Wheel Keypad

The optional filter wheel keypad allows the user to easily select any filter position from either one or two filter wheels. This is done by simply selecting the appropriate filter position key.

## Dual Slide-In Filter Holder

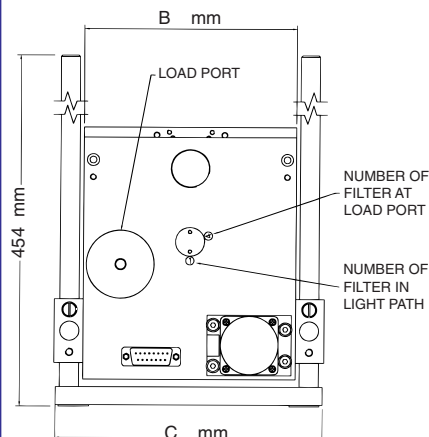
The dual slide-in filter holder mounts to the filter wheel and holds two neutral density or IR filters.

\*25mm shutters have maximum continuous speed of 10 Hz. Maximum burst speed of 40 Hz is for a maximum of five cycles per 500ms.

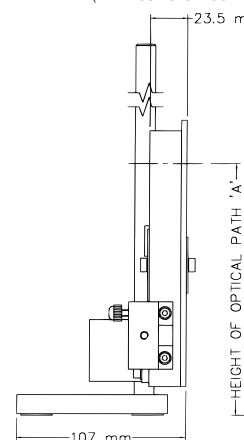
\*35mm shutters have maximum continuous speed of 5 Hz. Maximum burst speed of 20 Hz is for a maximum of five cycles per 500ms.

## Dimensions:

'A' Maximum on stand 540mm  
'A' Minimum on stand 34mm  
'A' Minimum off stand 28mm  
'B' for HF110 - 141mm  
'B' for HF108 - 159mm  
'C' for HF110 - 179mm  
'C' for HF108 - 195mm



MINIMUM OPTICAL PATH LENGTH  
(WHEN USING 'C' MOUNTS)



# Ordering Information

HF110	Filter wheel 10 pos./25mm	HF202HT	Shutter, high temperature, 25mm, stand alone
HF108	Filter wheel 8 pos./32mm	HF204HT	Shutter, high temperature, 32mm, stand alone
CSI00K	Keypad for manual control of filter wheels and shutters	<b>*Excitation Adapters for Transmitted and Emission</b>	
HF200	Shutter, 25mm, mounted to HF110	HF210	For Leica pre DM series
HF201	Shutter, 32mm, mounted to HF108	HF215	For Leica DM series
HF202	Shutter, 25mm, stand alone	HF220	For Nikon Eclipse series
HF204	Shutter, 32mm, stand alone	HF230	For Olympus BH series
HF205	Dual slide in filter holder 25mm	HF235	For Olympus BX, IX & AX series
<b>High Temperature Shutters</b>		HF240	For Zeiss Axio series
HF200HT	Shutter, high temperature, 25mm, mounted to HF110	HF245	For Zeiss pre Axio series
HF201HT	Shutter, high temperature, 32mm, mounted to HF108	* Please contact Prior Scientific for a complete list of excitation adapters that are available.	

**PRIOR**  
Scientific

PRIOR SCIENTIFIC INSTRUMENTS LIMITED,  
UNIT 4, WILBRAHAM ROAD, FULBOURN, CAMBRIDGE CB1 5ET  
TELEPHONE 01223 881711 FAX 01223 881710

PRIOR SCIENTIFIC INC.,  
80 RESERVOIR PARK DRIVE, ROCKLAND, MA 02370-1062  
TELEPHONE 781-878-8442 FAX 781-878-8736

VISIT PRIOR ON THE WEB AT [www.prior.com](http://www.prior.com)