

SPOTTM 5.2

BASIC Software

Imaging Software for Microscopy and Macro-Photography



**IF YOU ALSO PURCHASED SPOT ADVANCED SOFTWARE
OR ANY SPOT ADVANCED SOFTWARE MODULE:**

This guide and the activation codes below are for SPOT Basic Software. **SPOT Advanced Software and SPOT Advanced Software Modules come with their own guide and activation codes.**

For each computer, use the appropriate guide for the product you wish to install.

The unauthorized duplication or distribution of this software or documentation is an infringement of Diagnostic Instruments, Inc. rights to the software and may be subject to criminal and/or civil penalties.

SPOT Software License ID:

SPOT Software Activation Codes:



SPOT Imaging SolutionsTM
A division of Diagnostic Instruments, Inc.

6540 Burroughs Avenue • Sterling Heights • MI • 48314-2133
Toll free: 866.604.SPOT • Phone: 586.731.6000 • Fax: 586.731.6469
www.spotimaging.com



SPOT Imaging SolutionsTM
A division of Diagnostic Instruments, Inc.



SPOTTM 5.2



BASIC Software

Imaging Software for Microscopy and Macro-Photography

This installation guide is for SPOT Basic Software. See the SPOT Advanced Software installation guide to install SPOT Advanced Software.

Minimum System Requirements

Windows: Vista, 7 and 8: 32-bit and 64-bit

Mac: OS 10.8 to 10.10

Windows: 1 GHz Pentium 4 (or equivalent x86 SSE2 processor or greater, 1 GB RAM or greater

Mac: Intel only
1 GB RAM or greater

Before You Install

- If you are upgrading from SPOT 4.5 Software or later, and you are installing SPOT 5.2 Software on a different computer, you can transfer your calibrations and reticles from the old computer to the new one. On the old computer, start the SPOT Software and use the Setup menu to access the Calibrations or Reticles dialogs. Then, press the "Export" button to export the settings to a file. On the new computer, start SPOT 5.2 Software, use the Setup menu to access the same dialogs, and press the "Import" button to import the file(s) that you saved.
- Make sure you know the name and password for an administrator account. If you need help with this, contact your network administrator.
- Close any applications that are running.
- If you have a SPOT camera, make sure it is available, in case the installer asks you to connect it during the installation.
- DO NOT RUN ANY VERSION OF SPOT SOFTWARE UNTIL AFTER RESTARTING THE COMPUTER AT THE END OF INSTALLATION.

Note: If you have an earlier version of SPOT Software installed on your computer, it will still be available for use after you install the new version.

To Install →

Need more information? Have questions?

Contact us at:

Toll free phone: **1.866.604.SPOT**

Phone: **1.586.731.6000**

Fax: **1.586.731.6469**

Email: **info@spotimaging.com**

Web site: **www.spotimaging.com**



SPOT Imaging SolutionsTM

A division of Diagnostic Instruments, Inc.

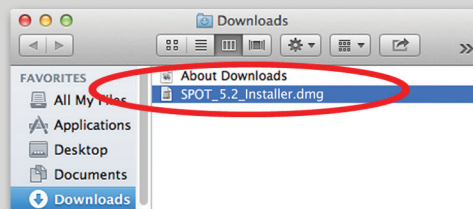
6540 Burroughs Avenue • Sterling Heights • MI
48314-2133



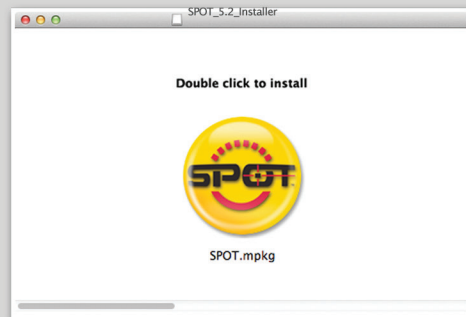
Mac users start here:

(Screen shots are representative only. Actual dialogs will vary depending on your system.)

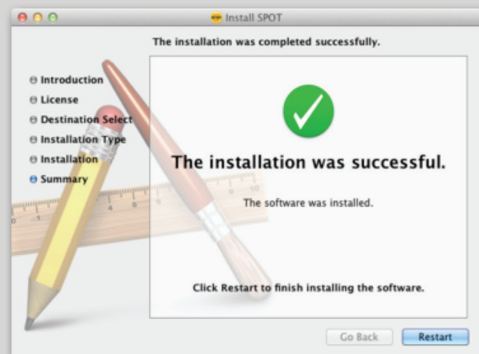
1. Double-click the disk image file that you downloaded, or insert the SPOT Software CD into your computer's CD-ROM drive and double-click the disk image file for the SPOT installer.



2. Double-click the SPOT icon (Installer package). The installer will guide you through the rest of the process. **Follow all of the instructions.**

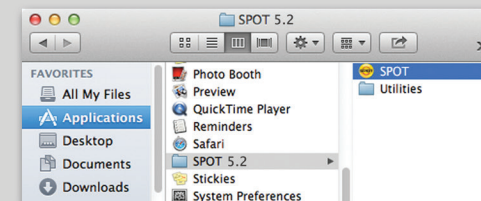


3. At the end of the installation, your computer will restart.

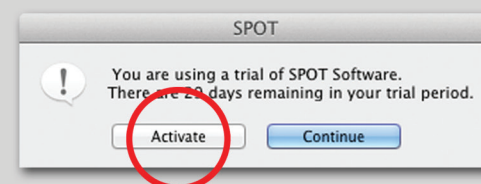


Mac users continue

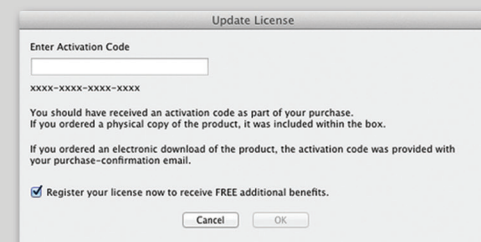
4. In the Finder, go to the Applications folder, find the "SPOT 5.2" folder, and double-click the "SPOT" application.



5. SPOT Software will display the trial warning box. Click the "Activate" button.



6. In the next window, enter your Mac activation code and click OK. The code can be found on the front of this guide*. For electronic downloads, the code can be found in the purchase-confirmation e-mail.

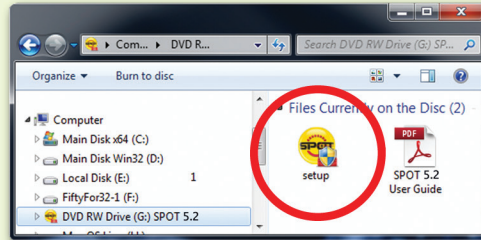


***The activation codes on the front of this guide are for SPOT Basic Software only. If you wish to install SPOT Advanced Software, use the activation codes on the SPOT Advanced installation guide.**

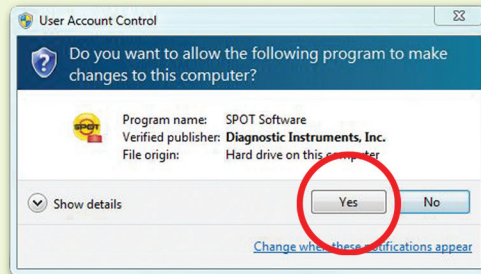
7. The installation of SPOT Software is now complete.

(Screen shots are representative only. Actual dialogs will vary depending on your system.)

1. Double-click the installer file that you downloaded, or insert the SPOT Software CD into your computer's CD-ROM drive. The CD-based installer should launch automatically. If it does not launch, double-click the "setup" application on the root of the CD.

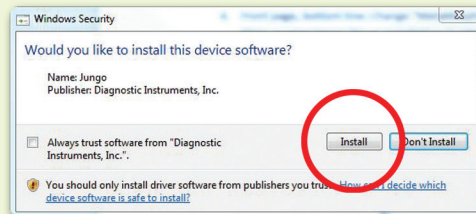


2. Some computers will ask you to allow the installer to make changes to the computer. Click "Yes" to proceed.

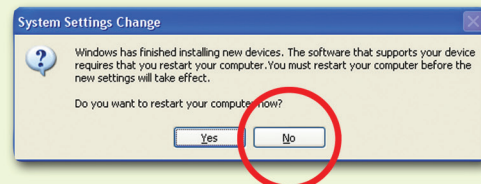


3. The installer will guide you through the rest of the process. **Follow all of the instructions.**

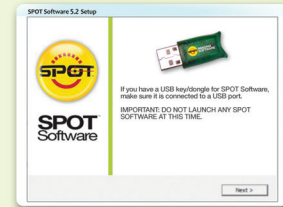
4. You may be asked if you want to install software from Diagnostic Instruments. Click "Install" or "Continue Anyway" to proceed.



5. If you are asked if you want to restart your system, click "No." You will restart later in step 7.



6. When asked to connect the USB key/dongle, ignore the message. You do not need a USB key/dongle for SPOT Basic Software.



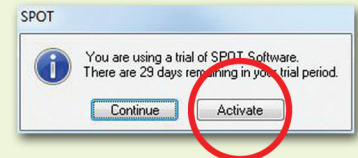
7. Click the "Restart" button to restart your computer.



8. Double-click the SPOT Software 5.2 icon on your desktop.

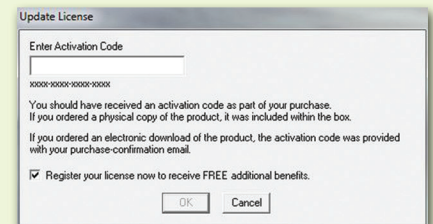


9. SPOT Software will display the trial warning box. Click the "Activate" button.



10. In the next window, enter your Windows activation code and click OK. The code can be found on the front of this guide*. For electronic downloads, the code can be found in the purchase-confirmation e-mail.

**The activation codes on the front of this guide are for SPOT Basic Software only. If you wish to install SPOT Advanced Software, use the activation codes on the SPOT Advanced installation guide.*



11. The installation of SPOT Software is now complete.