

SPOT CAMERA UPDATER FOR PATHSUITE 2.0

IMPROVES THE COLOR
ACCURACY OF INSIGHT
CMOS CAMERAS





WHAT IT DOES

The SPOT Camera Updater software does two things.

- It updates the Spot camera support library on your computer. The new library will be used when updating the camera's color correction file.
- It then updates the color correction file that is stored in the camera. This will result in better images with improved color.

WHY UPDATE YOUR
COLOR
CORRECTION FILE?

The new color correction file will improve the color accuracy of your captured images.

These improvements will be particularly noticeable in the range of hues used in pathology stains, such as Diff-Quik and H&E.

A thin, light gray vertical line is positioned to the left of the word 'REQUIREMENTS'.

REQUIREMENTS

The SPOT Camera Updater software...

- Is for Windows computers only.
- Will only update 5MP and 12MP Insight CMOS cameras.

INSTALL THE
SOFTWARE

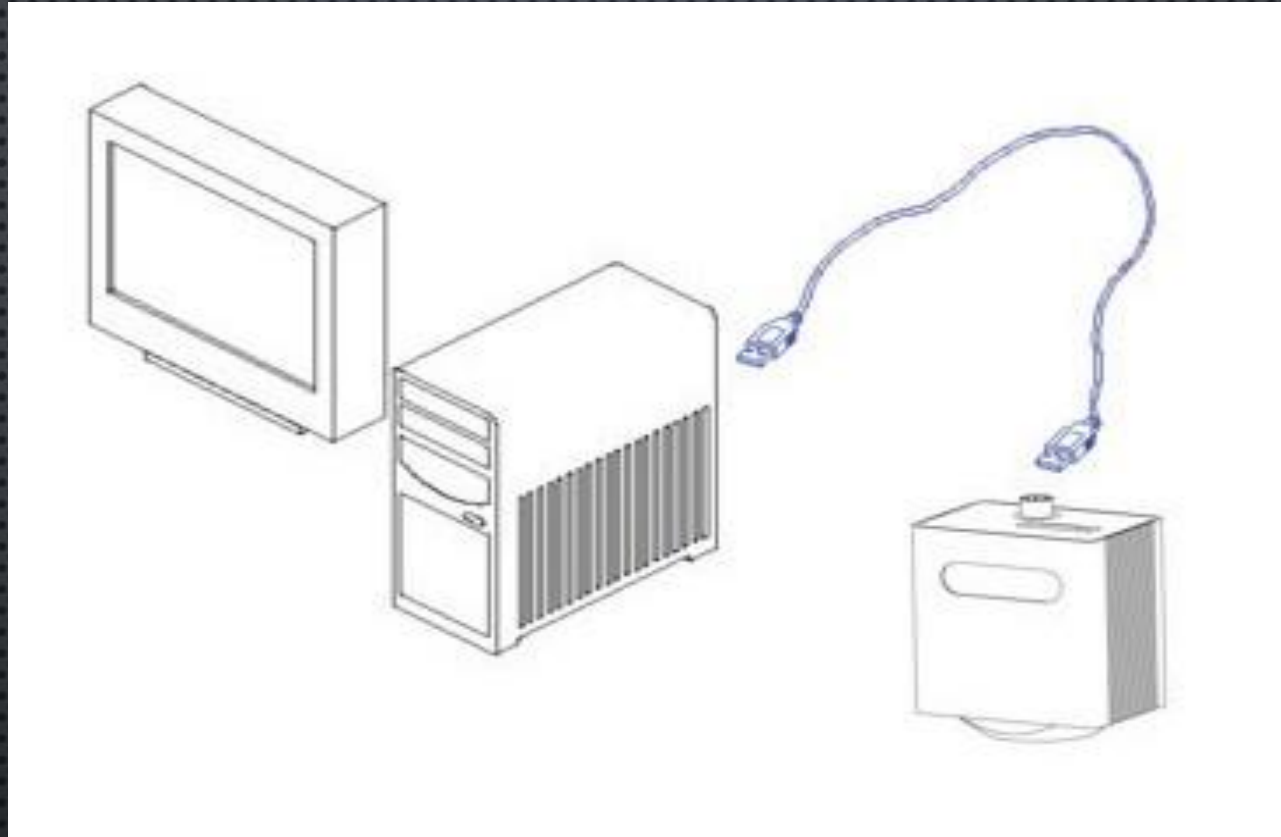


Launch the installer for the Camera Updater software.

(Camera_Updater_Setup.exe)

This will install the Camera updater software on your computer.

ATTACH THE
CAMERA



Connect your Insight CMOS camera to your computer.

(Multiple cameras can be connected at the same time. The Camera Updater software will update all the cameras in one execution.)

A thin, light gray vertical line is positioned to the left of the text.

RUN THE SOFTWARE



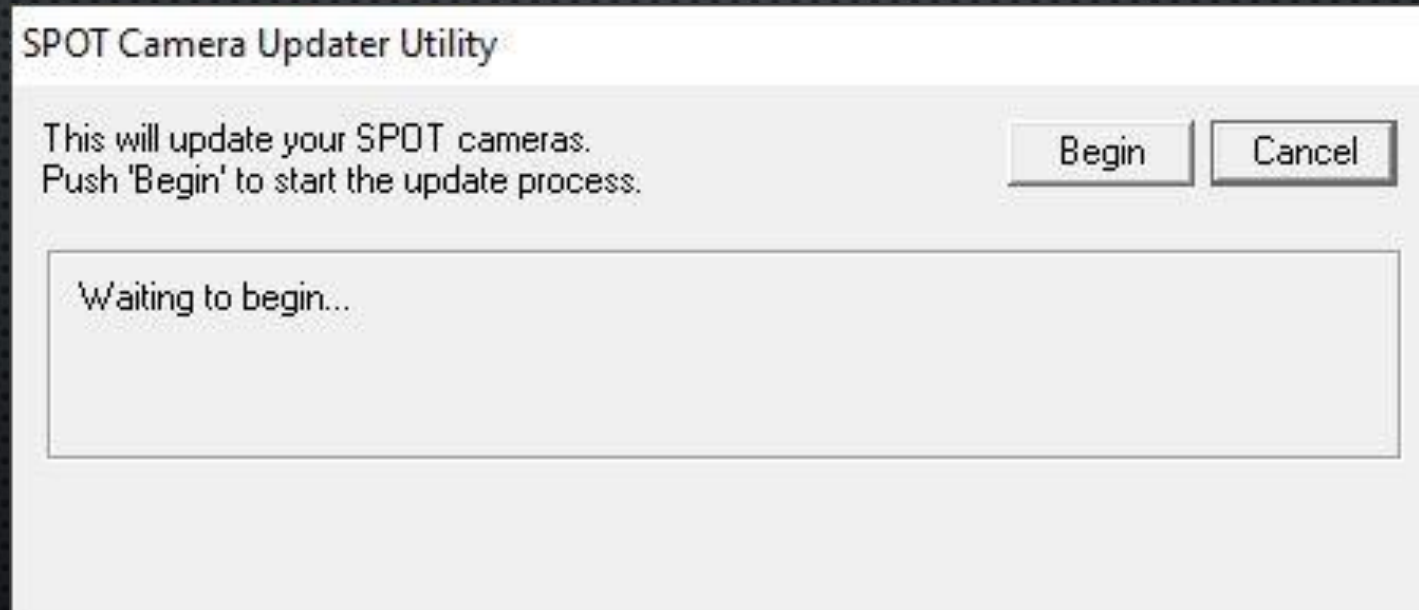
Next, launch the Camera Updater software.
(SPOT Camera Updater)

If your camera already has the new color correction file, there is no need for an update. You will see this message. Clicking OK will close the Camera Updater software.

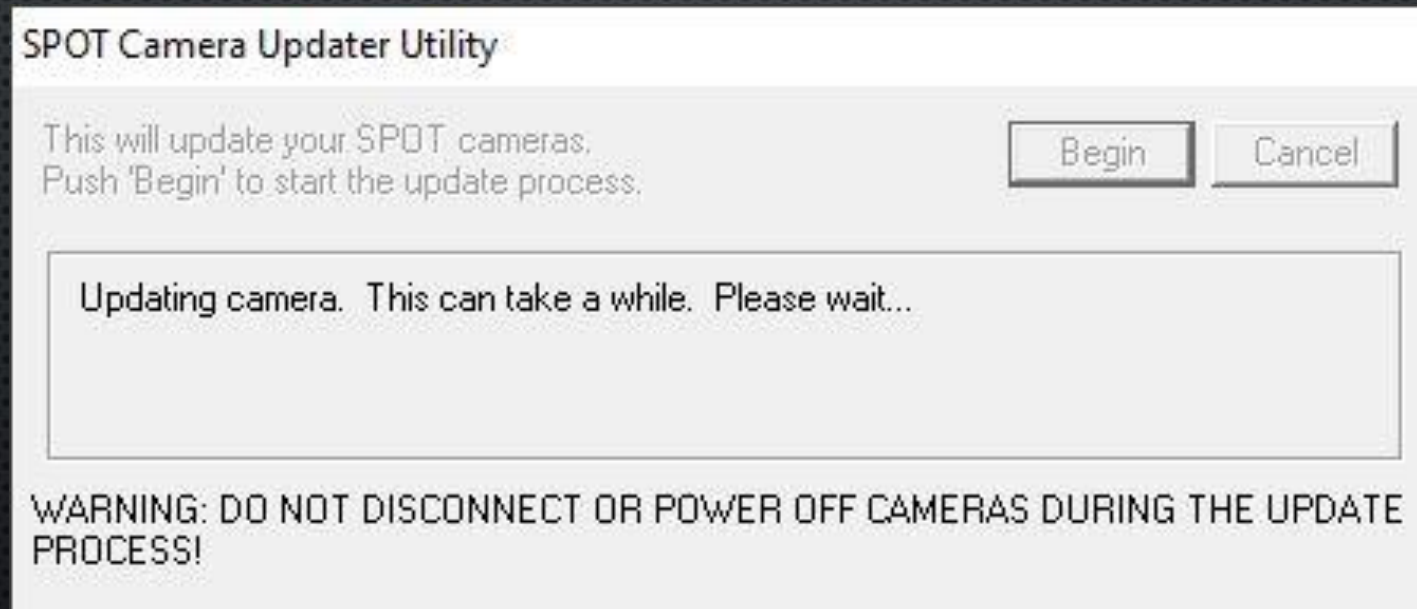


If the Camera Updater detects that the color corrections on your camera(s) need updating, you will see the following dialog.

Click “Begin” to update your camera(s).



The Camera Updater will now update your camera(s).
The color correction file is large and the process is slow.
Please be patient.



The Camera Updater announces that it has finished
updating your camera(s).

Clicking “OK” will exit the program.

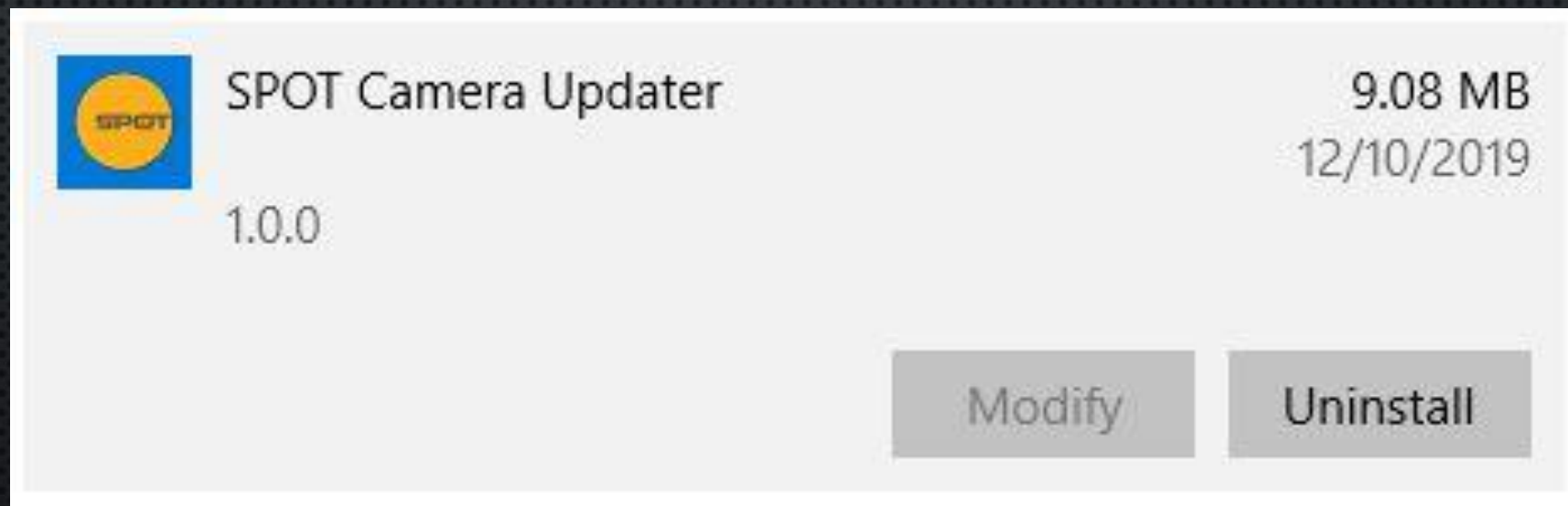


A thin, light gray vertical line is positioned to the left of the text.

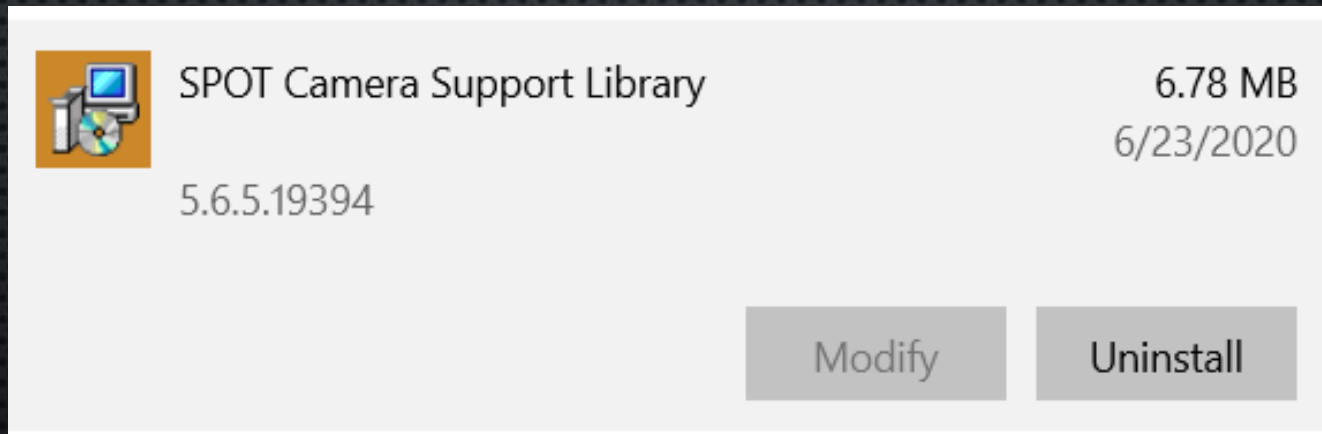
UNINSTALL THE
SOFTWARE

If no more cameras need updating, you can uninstall the
Camera Updater software.

Launch the Windows “Add or remove programs” utility, scroll
down to the “SPOT Camera Updater” and click “Uninstall”.



In the “Add or remove programs” utility, scroll down to the “SPOT CAMERA SUPPORT LIBRARY” listings. Right-click on each of the two listings and identify/select “SPOT Camera Support Library 5.6.5.19394” and click “Uninstall”

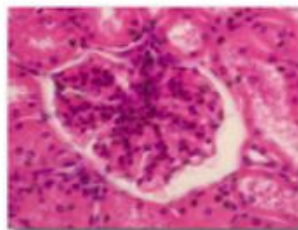
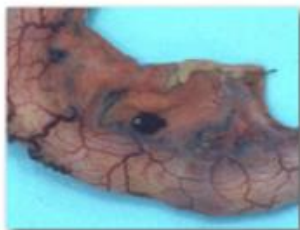


VERIFY THE UPDATE



PathSuite™ 2.0

Imaging Software for Macro Dissection, Micro Diagnosis and Remote Conferencing



Copyright 1997-2018 SPOT Imaging • All rights reserved
Portions Copyright 1988-1996 • Sam Leffler Copyright 1991-1996
Silicon Graphics, Inc. Copyright 2001 David Taubman, University of
New South Wales. This software is based in part on the work of the
independent JPEG Group.

TRIAL



Take a closer look

Live Mirror Window (active as trial)

Camera: Insight CMOS 5MP Color
Model: IN4105IR Serial Number: 291998
Hardware Revision: 1.1.13 Firmware Revision: 2.23.0

Operating System: Windows 8 (6.2.9200.0.0.2.1)

Loaded System Modules:

C:\Program Files (x86)\SPOT Imaging Solutions\PathSuite 2.0\Spot32.exe 2.0.77.19412

C:\WINDOWS\SYSTEM32\ntdll.dll 6.2.18362.815

C:\WINDOWS\System32\KERNEL32.DLL 6.2.18362.900

C:\WINDOWS\System32\USER32.dll 6.2.18362.815

Some sounds recorded by Mike Koenig:

Some icons by: icons8.com

Copy

System Info

Close

Your camera has been updated
to Hardware Revision 1.1.13.
(You can confirm this by selecting
“About PathSuite...” under the
Help menu.)



END