

Image credits:

Paul Danielson, Albany Research Center, OR

Dr. Michael W. Davidson, Florida State University

Dr. Rob Weaver, McCrone Institute

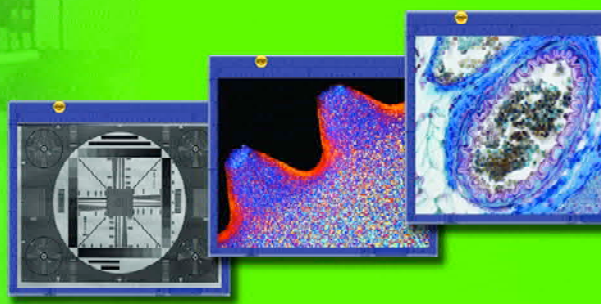
Joseph J. Buchino, M.D. Director of Pathology at Virginia Hospital

Dr. Catherine Carr, MBL, Woods Hole, MA



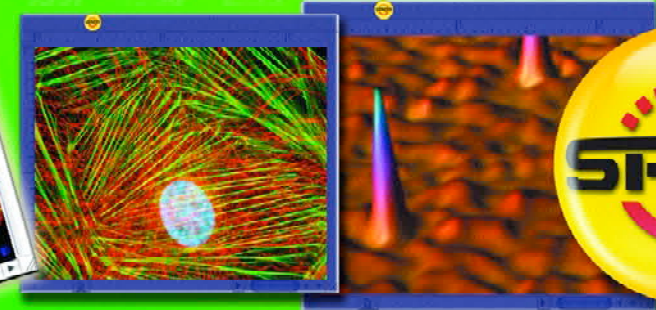
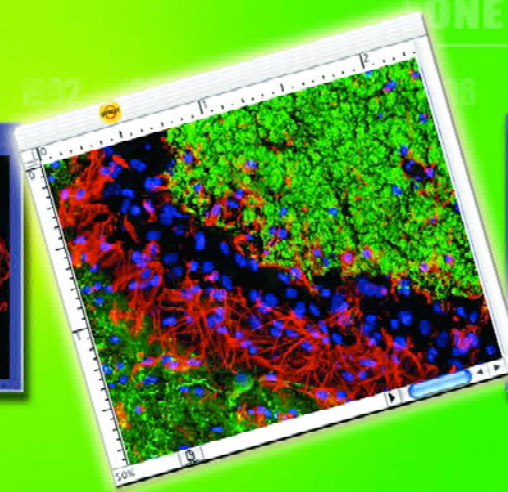
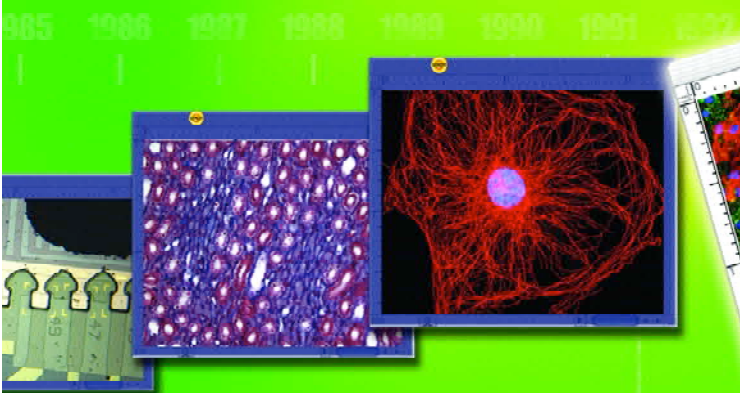
39 Years of Design and Manufacturing Excellence

Angelo Merlo
Founder, Diagnostic Instruments, Inc.



DIAGNOSTIC INSTRUMENTS, INC
6540 Burroughs Street
Sterling Heights, MI 48314
586.731.6000 • www.diaginc.com

ONE SOURCE FOR YOUR IMAGING SOLUTIONS



Full Line **Catalog**
one source for your imaging solutions

Introducing the...
New **SPOT**™
cameras



DIAGNOSTICINSTRUMENTS

ONE SOURCE FOR YOUR IMAGING SOLUTIONS

SelectorGuide

one source for your imaging solutions



DIAGNOSTIC
instruments, inc.

★ ★ Best fit for application

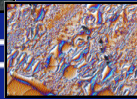
★ Suitable for application

High Res Inspection



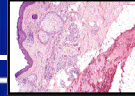
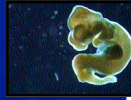
- Reflected Light
- Metallurgy
- Semiconductor
- Metrology
- Forensics
- Macro-photography
- Machine Vision

Metallurgy



- Brightfield
- Darkfield
- Pathology
- Histology
- Gross Anatomy

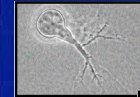
Darkfield



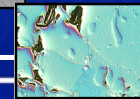
H&E slide

- Phase
- DIC
- Hoffman

Phase

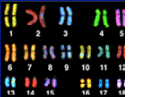


DIC

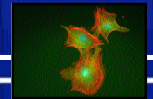


- Fixed Cell Fluorescence
- Karyotyping
- FISH

Karyotyp



Triple stain



INSIGHT™
Firewire
| page 4



FLEX™
Firewire
| page 5



RT3™
Firewire
| page 6



PURSUIT™
XPLORER™ 4MP
| page 7



XPLORER™
PURSUIT™ XS
| page 10-11

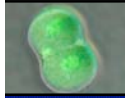


BOOST™
High Speed **EMCCD**
| page 8-9

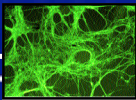


- Fluorescent Proteins
- GFP
- YFP

GFP/Phase



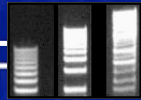
YFP



- Chemiluminescence
- Bioluminescence
- Gene Expression Profiles
- Whole Organism Fluorescence



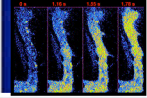
Luciferase



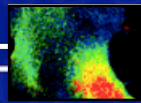
Chemi-gel

- FRET
- Ion Imaging
- Fura
- Flow 4

Calcium Ratio

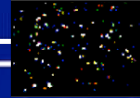


FRET

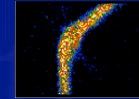


- FRAP
- TIRF
- Particle Tracking
- 4D- 6D Imaging
- Quantum Dot

Quantum Dot

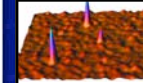


- Real-time Confocal



Confocal

- SMF
- Two Photon



SMF

Two Photon



★					
★					
★★	★				
★★	★★	★	★		
★★	★★	★★	★★	★★	★
★	★★	★	★★	★★	★★

INSIGHT™ cameras provide a feature packed imaging system for most documentation applications. When you buy an **Insight** camera, you benefit from engineering expertise gained from Diagnostic Instruments' research and development into high-end quantitative camera designs. The result is low noise, high speed image captures that produce stunningly clean views of your specimen. Some of the true strengths of the **Insight** camera system comes from the SPOT software that not only makes it easy to control the sophisticated hardware, but takes you well beyond image capture. Powerful, yet intuitive software functions provide many microscopists with all the tools they will ever need.

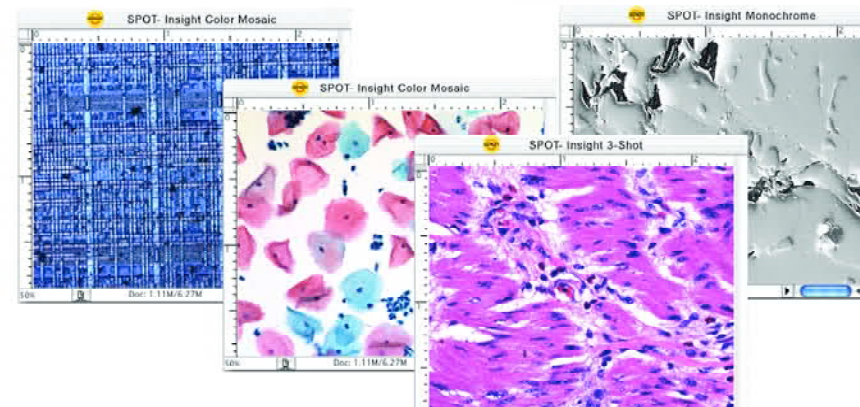
Insight gets your work done!

Key Features:

- Cost effective package/solutions
- High resolution replacement for video capture
- Real-time viewing
- Plug and play computer interface
- Powerful, easy to use software
- Color and monochrome models

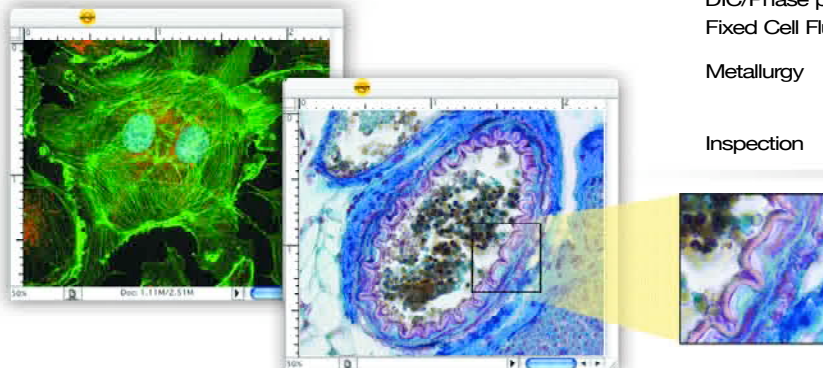
Features:	Benefit:
40 MHz live mode (dual channel 20 Mhz)	Real-time viewing of specimens
14 bit x 20 Mhz capture	High speed, low noise capture
1-20x programmable gain	Facilitates low light imaging
2 & 4 Mpixel CCD sensors	High resolution imaging
1" & 4/3" Format CCD sensors	Get full field-of-view without expensive couplers
High quantum efficiency CCD	Increases sensitivity for faster captures
1394a FireWire™ interface	Fast, easy to install computer interface
SPOT software	Easy to use powerful imaging environment

Application	Description	Model	Suitability
Pathology, Metallurgy, Color Brightfield	Highest resolution, highest field-of-view	IN 1430	Excellent
	Highest resolution, standard field-of-view	IN 1830	Excellent
	Standard resolution, highest field-of-view	IN 1420	Good
	Standard resolution, standard field-of-view	IN 1820	Good
Color Brightfield & Bright Fluorescence	Standard resolution, highest field-of-view	IN 1420	Good
	Standard resolution, standard field-of-view	IN 1820	Good
Visible Spectrum Monochrome Brightfield	Highest resolution, highest field-of-view	IN 1410	Excellent
	Highest resolution, standard field-of-view	IN 1810	Excellent
Broad Spectrum Monochrome Brightfield	Highest resolution, highest field-of-view	IN 1400	Excellent
	Highest resolution, standard field-of-view	IN 1800	Excellent
DIC/Phase plus Fixed Cell Fluorescence	Standard resolution, highest field-of-view	IN 1420	Good
	Standard resolution, standard field-of-view	IN 1820	Good



Key Features:

- Flexible resolution from high to ultra-high resolution
- Phenomenal color from co-site sampling
- Wide field-of-view
- Highly cooled
- Real-time viewing
- Plug-and-play computer interface
- Powerful, easy to use software
- Color model
- Extreme resolution monochrome model



FLEX™ Cameras combine acquisition flexibility with category leading specifications to set the new benchmark for high-resolution documentation applications. With **Flex** shifting sensor technology, you can select the resolution dependent on your needs: single-shot 4 MP capture for live/moving specimens, 4-shot 4 MP full color sampling for high magnification-fixed specimens, 16-shot 16 MP for low magnification-fixed specimens, or a 64 MP color (using image double) mosaic image for smooth large format publication.

Flex monochrome goes even further, providing 9-shot, 36 MP resolution and 16-shot, 64 MP true resolution without image doubling. With the higher QE of the monochrome CCD and 14-bit data capture, this is a perfect imaging camera for high resolution industrial inspection applications.

Flex cameras are an excellent solution for capturing images of both brightfield and fluorescence specimens. Making all this power and flexibility easy is **SPOT** Software that combines real-time viewing and image capture with essential post processing, storage and simple automation. **Flex** lets you do just what you want to do.

Features:

4 Mpixel CCD sensors
 Flex™ shifting sensor technology
 Color co-site sampling
 40 Mhz live mode (dual channel 20 Mhz)
 14 bit x 20 Mhz capture
 High quantum efficiency CCD
 -20°C differential cooling
 1-20x programmable gain
 4/3" format CCD sensors
 1394a FireWire™ interface
 SPOT Software

Benefit:

High resolution single-shot imaging
 Ultra-high resolution multi-shot imaging
 Truest high resolution color
 Real-time viewing of specimens
 High speed, low noise capture
 Increases sensitivity for faster captures
 Facilitates extended exposure for low light imaging
 Facilitates low light imaging
 Full field-of-view without expensive couplers
 Fast, easy to install computer interface
 Easy to use, powerful imaging environment

Application	Description	Model	Suitability
Pathology, Color Brightfield & Fluorescence	Ultra-high resolution, highest field-of-view	FX 1520	Best
DIC/Phase plus Fixed Cell Fluorescence	Ultra-high resolution, highest field-of-view	FX 1520	Best
Metallurgy		FX 1520 FX 1500	Best Good
Inspection	Extreme resolution, highest field-of-view	FX 1500	Best

The SPOT **RT3™** digital camera system is the newest version from the immensely popular SPOT **RT™** line of cameras, combining improved performance with **FireWire® connectivity**.

With an effective differential cooling of -43°C , and improved CCD sensor design, dark current has been suppressed to 0.003 e/p/s. This is a 20x improvement making the **RT3** an excellent performer for longer exposure fluorescent applications.

Image acquisition rates have been tripled, while reducing read noise by over 25%, providing even higher dynamic range when combined with the deep pixel wells of its Kodak KAI 2020 CCD.

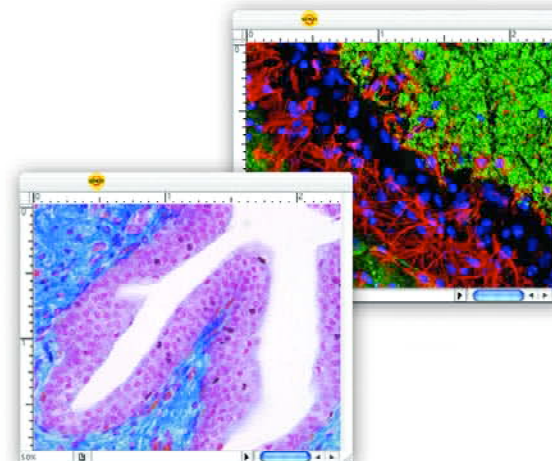
The **RT3** camera is offered in monochrome, color mosaic, and user selectable color/monochrome slider models, making this a great performer for both your documentation and quantitative research needs.

Key Features:

- Tremendous value
- Low noise
- Highly cooled, very low dark current
- FireWire connectivity
- Real-time viewing
- Powerful software support
- Smaller size
- Color, monochrome and slider (combined color and monochrome) models

Features:	Benefit:
2 Mpixel CCD sensors	High resolution single shot imaging
16 e- read noise	Precise readings for analytical applications
-43°C differential cooling, dark current 0.003 e/p/s	Major dark noise reduction
14 bit x 20 Mhz capture	Over 16,000 potential brightness levels
Improved high quantum efficiency CCD	Increases sensitivity for faster captures
High speed live mode	Real-time viewing of specimens
Programmable gain	Facilitates low light imaging
SPOT Software	Easy to use, powerful imaging environment
Large 3rd party driver selection	Choice of application software
Firewire (IEEE 1394a)	Plug and play high speed connectivity

Application	Description	Model	Suitability
Research pathology		RT 2540	Excellent
DIC plus Fixed Cell Fluorescence		RT 2500	Excellent
Fluorescence proteins GFP, YFP	Cooled high sensitivity	RT 2500	Very Good
Core lab	Multiple application capability: Brightfield, Fixed Cell Fluorescence, DIC, Phase	RT 2540	Excellent
Fixed Cell Fluorescence		RT 2540	Excellent



Key Features:

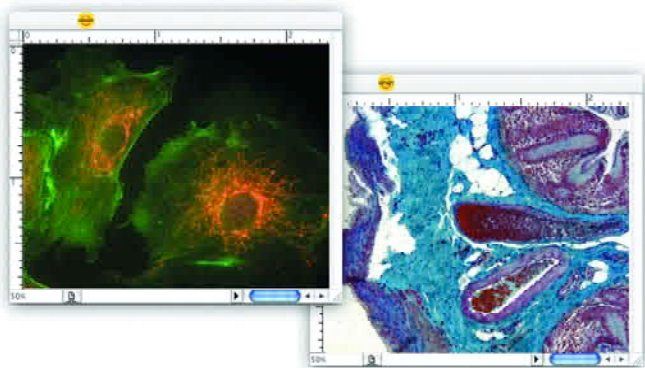
- Large field-of-view
- High resolution
- Low noise readout with optimized streaming mode
- Software selectable readout speed
- High dynamic range
- Deep, regulated cooling
- Real-time viewing
- Powerful software support
- Monochrome and slider (combined color and monochrome) models

PURSUIT™ 4MP cameras are solid, low noise cameras that provide a large field of view without need of reduction optics. Low noise read out and regulated cooling facilitates critical quantitative applications.

XPLORER™ 4MP cameras bring to bear top performance specifications on all fronts, including superior regulated cooling, making it the obvious choice for labs that need to perform a wide variety of critical quantitative applications including long exposure, low light imaging.

Control of these cameras can be accomplished by **SPOT Software** for simple to moderately complex imaging tasks, or by using a number of sophisticated 3rd party applications that specialize in complex control, automation, and analysis of whole experiments. Both cameras are available in **Slider** versions.

Pursuit and Xplorer 4MP cameras let you see the whole picture.



Features:	Benefit:
-----------	----------

Regulated cooling to -42° C (Xplorer), -10° C (Pursuit)	Repeatable thermal frames and major dark noise reduction for long exposure applications.
4 Mpixel CCD sensors	High resolution single-shot imaging
21.4 mm CCD diagonal	Large field-of-view
10 e- read noise	Precise readings for analytical applications
14 bit capture	16,384 brightness levels
10 & 20 MHz readout	Software selectable readout speed
30,000 e- well depth (1x1 binning)	High dynamic range
60,000 e- well depth (2x2 binning)	Extended dynamic range at lower resolution
High quantum efficiency CCD	Increases sensitivity for faster captures
High speed live mode	Real-time viewing of specimens
1-20x programmable gain	Facilitates low light imaging
SPOT Software	Easy to use, powerful imaging environment
Large 3rd party driver selection	Choice of application software

Application	Description	Model	Suitability
DIC & Fluorescence		PR 1600	Excellent
H&E and Fixed Cell Fluorescence		PR 1640	Excellent
Bioluminescence & Chemiluminescence	Deep cooling, low noise, 50% QE	XP 1700	Excellent
Core lab	Multiple application capability: color and monochrome imaging from brightfield to low light applications	XP 1740 PR 1640	Best Excellent



The **SPOT** line of **Boost EMCCD** camera systems utilizes Electron Multiplication technology to deliver supreme performance for extremely low light microscopy applications. Electron multiplication gain of up to 1000x offers the capability to extract extremely faint signals without the need for an image intensifier.

The **Boost** camera is offered in three base models of CCD formats and includes front illuminated and extremely sensitive back illuminated (>92% QE) versions. Flexibility is a hallmark of this camera line with selectable read speeds, adjustable vertical clocking, adjustable True Linear gain multiples, electron multiplying and non-EMCCD read options. Cooling options allow this camera system to achieve -100° C cooling while vacuum-sealing technology insures that cooling performance will be maintained for years to come.

Data can be acquired at up to 16 bits with less than one percent non-linearity, assuring data integrity for even the most demanding imaging applications. Using electron multiplication technology, phenomenal frame rates (over 5,000 subframes per second) can be achieved with effectively negligible read noise.

Key Features:

- Electron Multiplication Gain Technology
- Extreme, regulated cooling to -100° C
- Resolution up to one megapixel
- Selectable readout speed and non-EMCCD mode
- Full frame acquisition over 500 f/s
- SPOT software interface
- High level 3rd party software support



KEY PERFORMANCE BY MODEL

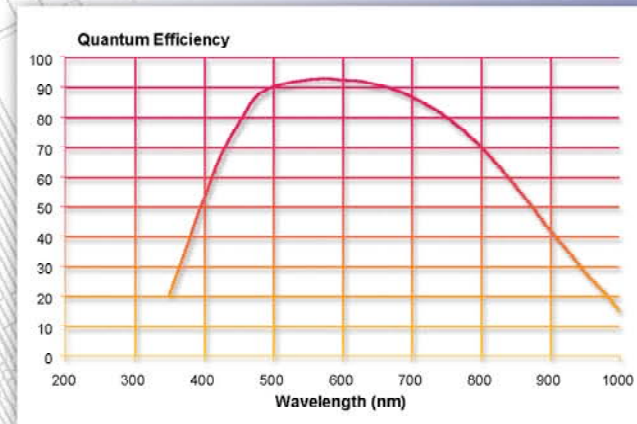
		BT1900	BT2000	BT2100
Deep cooling	Standard	-85° C	-85° C	-85° C
	With supplemental cooling	-90° C	-90° C	-90° C
	With optimum cooling	-100° C	-100° C	-100° C
Significant well-depth	Active pixel capacity	200,000 e-	220,000 e-	40,000 e-
	Gain register pixel capacity	800,000 e-	800,000 e-	80,000 e-
High-speed capture	Full frames	500 f/s	35 f/s	31.5 f/s
	Subframing	5,000 f/s	526 f/s	446 f/s
Multiple speed readout	Selectable in MHz	10, 5, 3, 1	10, 5, 3, 1	35, 27, 13
Application	Suitability			
SMF, Two Photon	Best			
Real-time confocal, TIRF, Particle tracking	Best (also consider Xplorer XS)			
Fluorescence, FISH, GFP	Good (Xplorer is best)			



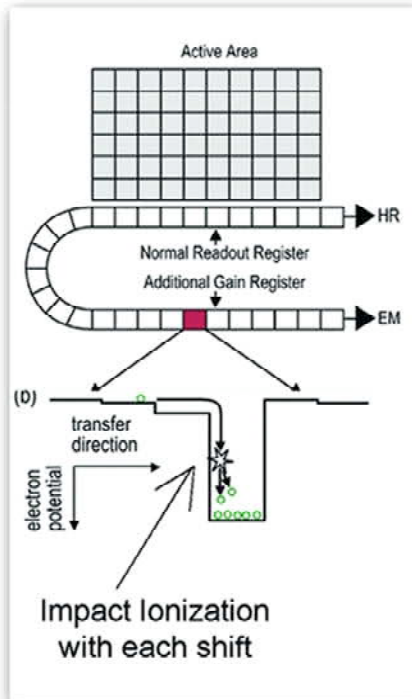
Boost - EMCCD, a new solution for special microscopy needs.

Many new techniques for studying live organisms result in observations at low light levels. These techniques have been constrained by the frame rates, resolution, sensitivity, and electronic noise levels of the cameras used to capture the images. Higher resolution and shorter exposures resulting from higher frame rates reduce the number of signal photons available for capture within each pixel. Concurrently, higher clocking speeds used for higher frame rates increase the read noise contribution.

The result is a lower signal-to-noise ratio, producing images that appear fuzzy or below the limit of detection. What these applications need is some way to “Boost” the signal-to-noise ratio!



Back-thinned CCD - BT2000 (at -20° C)



EMCCD Technology provides the answer...

EMCCD Technology involves the addition of an “**Electron Multiplication**” register to a standard **CCD** structure. This register produces a multiplication of the signal electrons through a phenomena called “Impact Ionization.” The novel and useful aspect of this phenomena is that signal gain is amplified before the read noise component is added to the signal. Since this gain can be controlled, the signal can easily be BOOSTED well beyond any increased read noise during high speed clocking of the CCD. This opens the way for acquiring higher frame rates through shorter exposures even in extremely low light level applications.

Every electron counts...

That’s why most Boost cameras are designed using extremely efficient back-thinned CCD sensors.

Once the detection limit reaches one to two photons, any individual noise electron will deteriorate the signal-to-noise ratio. A critical remaining source of noise is thermally generated dark current. It is particularly troubling since it is generated concurrently with the signal electrons and when it occurs, it is indistinguishable from a signal electron. Boost cameras eliminate this source with -70° C cooling standard and optional -100° C cooling for the most demanding of applications.



Example of the magnitude of reduced thermal noise provided by Boost cooling



Introducing
Pursuit™-XS

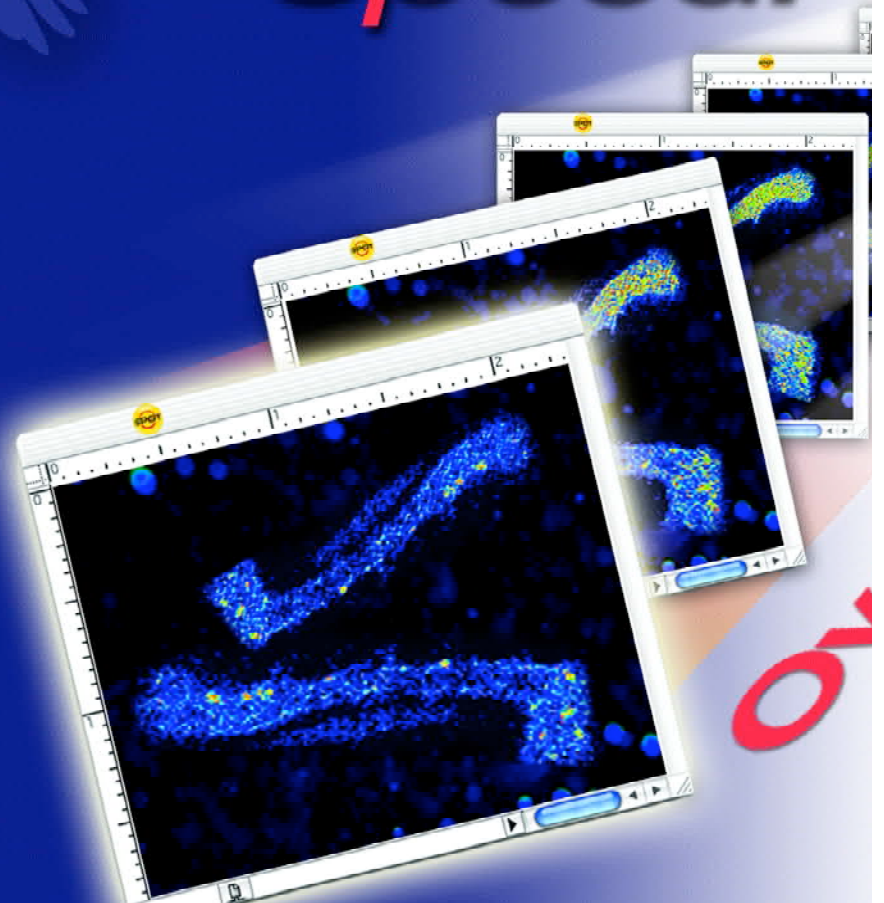
When
you need
**Rock Solid
Data at High
Speed!**

The XS series of Pursuit and Xplorer digital cameras are designed for applications where speed, sensitivity and data integrity are the primary imaging requirements.

These cameras have been designed with extremely quiet electronics to suppress read noise and also provide regulated cooling to virtually eliminate any effects of dark current (Xplorer-XS).

The XS series is perfect for live cell imaging and fast occurring events, as well as providing the flexibility to deliver incredible results for low light, long exposure fluorescence work.

These cameras are offered in monochrome and slider models.



Key Features of the XS Series:

- Low noise, high-speed readout with optimized streaming mode
- High QE CCD >60% – **Sony ICX-285**
- High dynamic range
- Software selectable readout speed
- Excellent resolution
- Regulated cooling with deep cooling (Xplorer)
- Real-time viewing
- Powerful software support-SPOT and 3rd party
- Monochrome and slider (combined color and monochrome) models

17 full frames per second

Introducing **Xplorer™-XS**



KEY PERFORMANCE

		XS SERIES
High-speed capture	Full frames	Over 11 frames per second
	Subframing w/binning	Over 130 frames per second
Sensitivity	High QE CCD– Sony ICX-285	Over 60% QE
Low noise	Read noise suppression	4.5 e- @ 10 MHz 5.5 e- @ 20 MHz
	Thermal noise suppression	-10° C regulated Pursuit -42° C regulated Xplorer



Application	Suitability
Ion imaging	Excellent / Best
FRET, FRAP	Excellent / Best
Real-time confocal	Excellent
Core lab flexibility	Excellent

See what you have been missing...

...SPOT Hardware Makes The Difference!

Advanced technologies to meet your needs

SPOT cameras are designed from the start for use in scientific imaging applications. This design philosophy is essential for high-end quantitative imaging applications and the benefits can also be seen in the beautifully clean images throughout the entire SPOT camera line.

High QE scientific image sensors, the first step to sensitivity

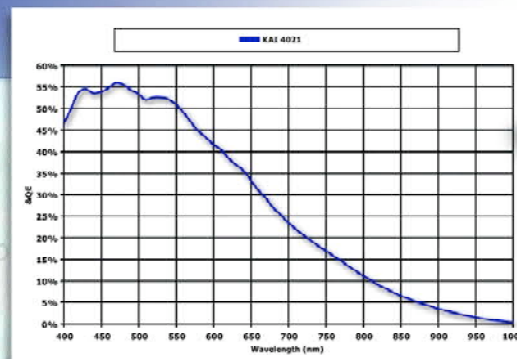
SPOT cameras use the latest generation of high quantum efficiency sensors from Kodak and Sony. These interline sensors can achieve over 60% peak QE, have large dynamic range, and provide extremely low noise readouts. These improvements allow the current generation of interline sensors to rival and surpass full frame sensors for sensitivity, while providing the reliability and speed of electronic shuttering.

Low noise circuitry, the key to preserving sensitivity

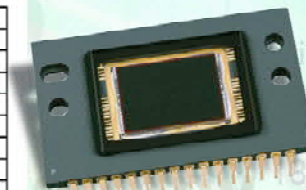
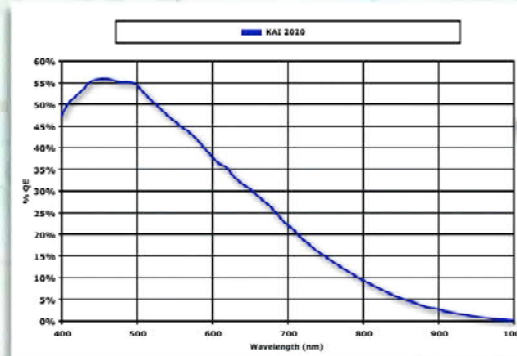
SPOT cameras preserve pixel values with sophisticated 4th generation analog-to-digital circuit design resulting in low noise, high speed, 12 & 14 bit digitization. Computer connection is via 1394a FireWire™ or Universal PCI slots, providing ease of connectivity and speed.

Advanced Peltier cooling provides low light performance

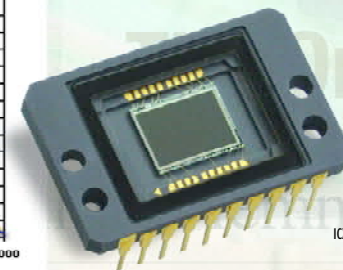
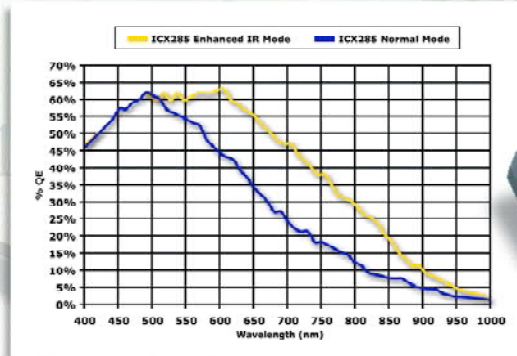
SPOT cooled cameras utilize advanced, low maintenance Peltier cooling systems to suppress dark current and bright point noise. Unregulated cooling models primarily provide noise reduction while regulated models can take advantage of thermal correction frames to provide fully corrected image data.



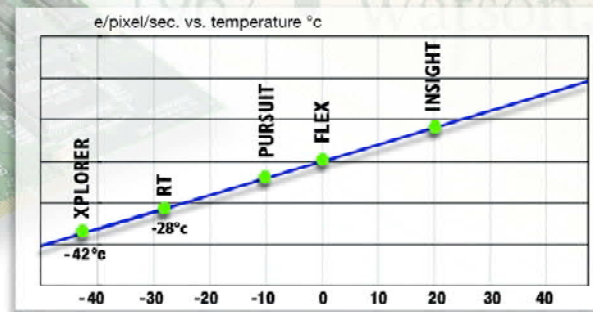
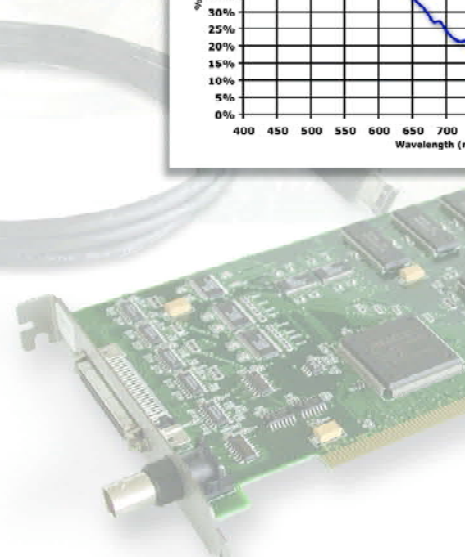
KAI4021

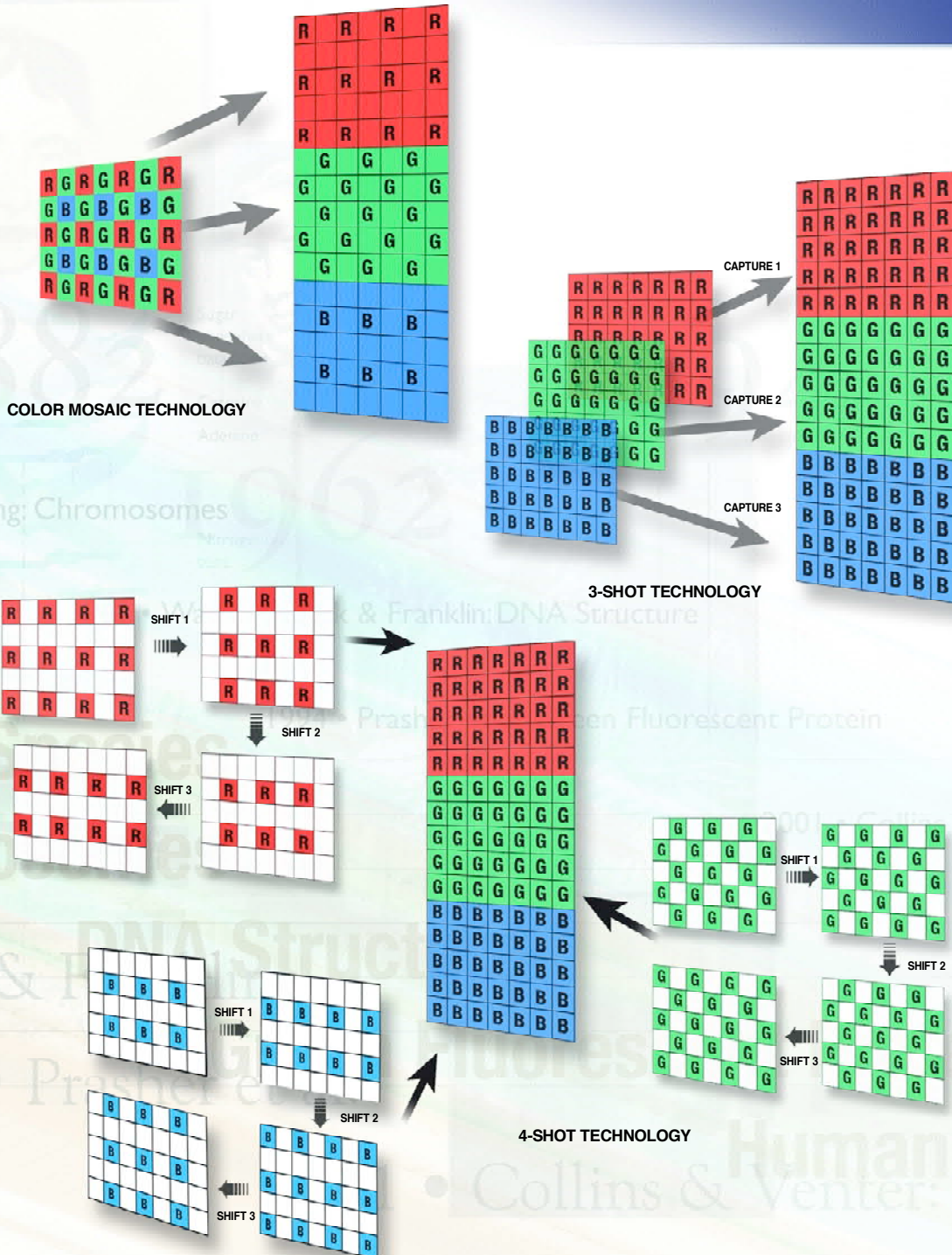


KAI2020



ICX285





Application Driven Solutions: Choose the model that's right for you.

Diagnostic Instruments designs and manufactures a variety of different camera models precisely because there are many different applications with different needs. Don't settle for the one camera fits all solutions that some manufacturers present you, get the camera that is right for your application.

Monochrome Models

Non-infrared filtered models are very useful for scientific imaging of single wavelength light into the near infrared of both fixed and moving specimens. The addition of an IR blocking filter facilitates a broad spectrum, visible light observation of both fixed specimen and moving specimen samples.

Color Mosaic Technology

This technology coats individual pixels on the sensor with either a red, green or blue filter. When the CCD sensor is read, the missing two colors for each pixel location are calculated from the surrounding pixels that contain the missing color. The advantages of this technology includes its capture of the color data in one shot, its low price, its capability to image live specimens and its high sensitivity.

3-Shot Color Technology

This technology adds a red-green-blue color-changing filter in front of the CCD. Three consecutive images are captured, one in each of red, green and blue color states- measuring every color value at every pixel. The advantage of this technology is the full resolution of the CCD is maintained for each color and the color-changing filter can be shifted out of the light path to allow quantitative monochrome imaging in the same camera. This color capture has comparable resolution to a color mosaic camera with four times as many pixels. The primary limitation for this technology is that it has limited use with moving specimen images on phase contrast set-ups.

FLEX™ Shifting Pixel Color Technology

This technology starts out with a color mosaic sensor and mounts it on a piezoelectric x-y carriage. The shifting pixel camera can take a single shot and provide color mosaic resolution that has all the pros and cons of that technology. In a second mode, the camera takes four consecutive images as the piezoelectric carriage moves the whole sensor in one-pixel increments in a 2 x 2 matrix so that each pixel location in the image will have each of the sensors colors shifted through it. This mode provides full color sampling much like 3-shot color sampling. A third mode moves the sensor 16 half pixel moves in a 4 x 4 matrix providing full color sampling at 4 times the CCD resolution. Flex technology provides standard color mosaic resolution for moving specimen images, as well as high & ultra high resolution modes for fixed specimen images.

• What is it?

SPOT Slider style cameras offer users the flexibility of capturing images in either color or monochrome without the need to purchase two individual cameras.



• How does it work?

To begin with, each slider camera acquires its images utilizing a highly efficient monochrome CCD. The slider's design and use are really quite simple.

COLOR SETTING

Pulling the slide lever moves the color filter into place. The projected image is filtered for each primary color, red, green and blue. The computer combines all three images to provide the final full color, full resolution image.



The "magic" is in our control of the filter, allowing it to filter for each of the necessary colors through a single filter assembly. The image is then reconstructed by your computer, giving you the highest possible "true" resolution color images.

MONOCHROME SETTING

When the slide lever is pushed in, a clear glass compensator "slides" between the sample and the CCD. The image is then projected and captured in monochrome.



• When would you use it?

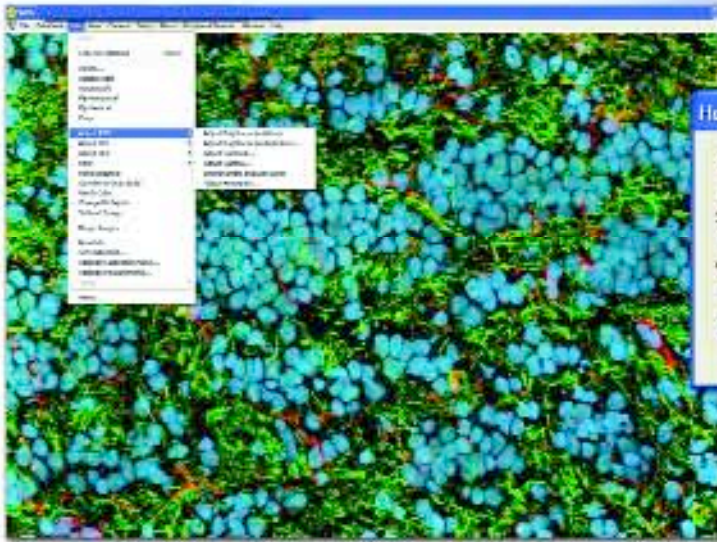
Use color imaging mode when **full color brightfield imaging** is required.

Use monochrome when you want **maximum sensitivity or when monochrome acquisition** is appropriate (fluorescent imaging, live cell activities).

3RD PARTY SOFTWARE SUPPORT



3rd Party Software driver support is updated on a continuing basis. Please visit our website at www.diaginc.com for the most current information. All product names mentioned on this page are the property of their



Make it even better...

Enhance your images with the extensive and readily available set of tools in the SPOT Software. SPOT Software supports multiple color spaces and multiple bit depths to allow you maximum control of your imaging environment.



Information at your fingertips ...

Know where your images are when you need them. By setting up the SPOT image database, you can catalog your images with key search fields. Then when you need your images, set a search and retrieve just the images you want.



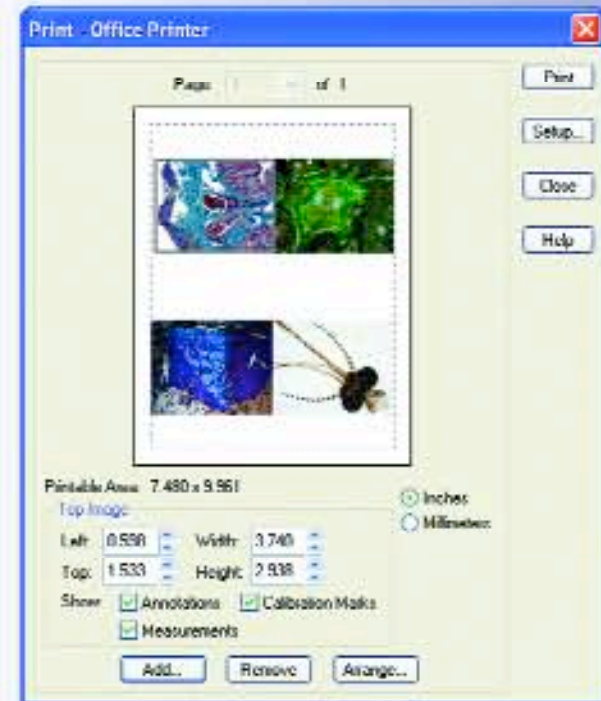
Peripheral Device Control?

Control your hardware directly from the SPOT macro language. The interface includes command line creation, editing, as well as command library import and export.



Getting the word out...

Reporting your results to your colleagues? Create a standard professional presentation with SPOT Software's report generator. Reports can be made from open images or from database images and text.



Easy as Drag and Drop...

Don't struggle to lay out your images for printing. With SPOT Software just select your images, select a standard layout and print. Custom layouts are no problem either. Just use your pointer to interactively position and size your images on your page. With SPOT, it's that easy!



Power at your fingertips!

Speed your workflow by keeping your most often used menu functions and macros on the Floating Taskbar, and then let each user design their own. Simple to set up, a pleasure to use!



SPOT software is available for both Windows and MAC operating systems.

Need higher level functions or automation? SPOT Cameras are fully supported by third party software developers making nearly any imaging task conquerable.

Be Great...

...Show Off Your Mind!

Diagnostic Instruments' 39 years of experience is focused on producing scientific camera systems that enable its users to excel. SPOT™ imaging systems integrate sophisticated optics, hardware and software, to produce an environment optimized for your specific application. SPOT™ cameras let you be great and show off your mind!

Many routine digital imaging applications can be handled by the SPOT™ software included with your camera. Now digital imaging is as easy as picking an image setup, viewing the specimen in real-time right on your computer, then capturing a vibrant, high-resolution color or monochrome image. Once captured, enhancements may be needed. A few clicks later and your enhancements are done. Next annotate your image to communicate your thoughts. Finished with the image, store it to the database with a few notes. Months later, open the database and retrieve this image as well as similar images. Now add calibration marks and measure critical features. Then arrange the images of interest on a single sheet and print them out. Need a more complete presentation? Drop the images into the report generator, add your analysis and get a hard copy for presentation. This is just the start. Repetitive tasks can be easily automated with SPOT Software's macro scripting capabilities. These macros and common imaging tools can be kept near at hand with the floating taskbar. With SPOT Cameras the focus is on your work and getting it done, not on managing the camera.

If your application calls for a higher level of automation or analysis, be assured that SPOT cameras are supported by one of the widest selections of third party software applications and hardware peripherals.

1665 • Robert Hooke: Micrographia
1683 • Anton van Leeuwenhoek: Microanatomy
1796 • Edward Jenner: Smallpox vaccine
1859 • Charles Darwin: The Origin of Species
1882 • Robert Koch: Bacteriology
1962 • Watson & Crick: DNA structure

Your Reputation

Your Future

What Will

2005...

20

Not an afterthought

Although SPOT Cameras have been designed for ease of use, there are times you will need help.

In these situations...

Follow the leader...

As an established member of the microscopy community, Diagnostic Instruments has selected leading imaging specialists around the world to provide our local representation. These specialists will handle such things as on-site evaluation of your imaging needs, demonstrations of the SPOT camera product and the integration of SPOT camera systems with appropriate optical couplers, computers, third party software and hardware.

Keep it in shape...

Diagnostic Instruments provides SPOT Cameras with

- 1 year software maintenance agreement
- 2 year hardware warranty

To continue coverage after the standard warranty expires, please inquire about our extended warranty and software maintenance programs.

Get a helping hand...

Diagnostic Instruments' technical staff is readily available to help you through any problems you may encounter. If your problem is particularly difficult, we can consult with our hardware, software, optical and application engineers for greater insight. At Diagnostic Instruments, the resolution of your problem is our ultimate goal.

Legacy Be?

2007