

SPOT™ 5.2



ADVANCED Software

Imaging Software for Microscopy and Macro-Photography

Activation codes below include these **SPOT Advanced Software** modules:

- | | | |
|-------------------------------|--|---|
| <input type="checkbox"/> None | <input type="checkbox"/> Quantitative Imaging | <input type="checkbox"/> Extended Depth of Focus |
| | <input type="checkbox"/> Peripheral Device Control | <input type="checkbox"/> Extended TWAIN Interface
(Windows only) |
| | <input type="checkbox"/> Image Overlays | |

USB Key/Dongle Identification

If you have more than one USB key/dongle, make sure you are using the right one for the e-mail activation codes, as follows:

1. Insert the USB key/dongle.
2. Start SPOT 5.2 Software.
3. If you see the trial warning box, click the "Continue" button.
4. *Windows only:* Use the "About SPOT..." command from the "Help" menu.
5. *Mac only:* Use the "About SPOT..." command from the "SPOT" menu.
6. In the resulting window, look for the line that identifies the "License ID." There may be more than one. If one of the license IDs listed matches the license ID shown in your email, you have inserted the correct USB key/dongle.

Software: SPOT Advanced - trial mode
 SPOT Software Build Details:
 Version: 5.2.3 Build 12618, Type: Release x86, Date: 08/19/14
 SPOT Camera Support Library Build Details:
 Version: 5.2.1 Build 12618, Type: Release x86, Date: 08/19/14
 License Details:
 Peripheral Device Control (active as trial)
 Extended Depth of Focus (active as trial)
 Extended TWAIN Interface (available as trial)

SPOT Software License ID:

USB Key/Dongle

SPOT Software Activation Codes:



SPOT Imaging Solutions™
 A division of Diagnostic Instruments, Inc.

6540 Burroughs Avenue • Sterling Heights • MI • 48314-2133
 Toll free: 866.604.SPOT • Phone: 586.731.6000 • Fax: 586.731.6469
www.spotimaging.com



SPOT Imaging Solutions™
 A division of Diagnostic Instruments, Inc.



SPOTTM 5.2



ADVANCED Software

Imaging Software for Microscopy and Macro-Photography

Minimum System Requirements

Windows: Vista, 7 and 8: 32-bit and 64-bit

Mac: OS 10.8 to 10.10

Windows: 1 GHz Pentium 4 (or equivalent x86 SSE2 processor) or greater, 1 GB RAM or greater

Mac: Intel only
1 GB RAM or greater

Before You Install

- If you are upgrading from SPOT 4.5 Software or later, and you are installing SPOT 5.2 Software on a different computer, you can transfer your settings from the old computer to the new one. On the old computer, start SPOT Software and use the Setup menu to access the dialogs of the settings you'd like to transfer. Then, press the "Export" button to export the settings to a file. On the new computer, start SPOT 5.2 Software, use the Setup menu to access the same dialogs, and press the "Import" button to import the file(s) that you saved. *Note that to import or export Image Setups, your SPOT camera will need to be connected to the old computer and powered on.*
- Make sure you know the name and password for an administrator account. If you need help with this, contact your network administrator.
- Close any applications that are running.
- If you have a SPOT camera, make sure it is available, in case the installer asks you to connect it during the installation.
- DO NOT RUN ANY VERSION OF SPOT SOFTWARE UNTIL AFTER RESTARTING THE COMPUTER AT THE END OF INSTALLATION.

Note: If you have an earlier version of SPOT Software installed on your computer, it will still be available for use after you install the new version.

To Install →

Need more information? Have questions?

Contact us at:

Toll free phone: **1.866.604.SPOT**

Phone: **1.586.731.6000**

Fax: **1.586.731.6469**

Email: **info@spotimaging.com**

Web site: **www.spotimaging.com**



SPOT Imaging SolutionsTM

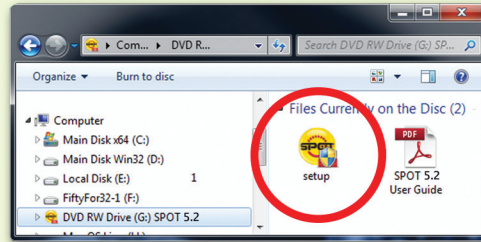
A division of Diagnostic Instruments, Inc.

6540 Burroughs Avenue • Sterling Heights • MI
48314-2133

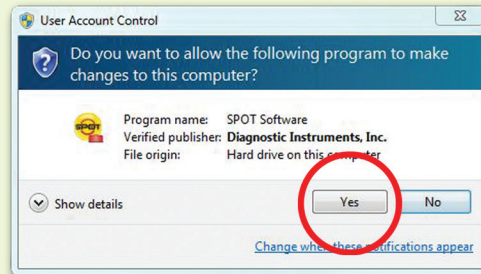
The unauthorized duplication or distribution of this software or documentation is an infringement of Diagnostic Instruments, Inc. rights to the software and may be subject to criminal and/or civil penalties.

(Screen shots are representative only. Actual dialogs will vary depending on your system.)

1. Double-click the installer file that you downloaded, or insert the SPOT Software CD into your computer's CD-ROM drive. The CD-based installer should launch automatically. If it does not launch, double-click the "setup" application on the root of the CD.

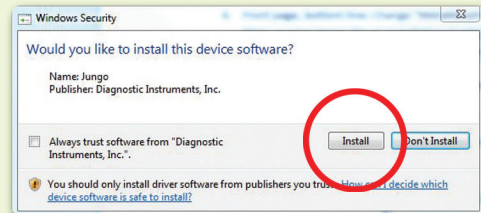


2. Some computers will ask you to allow the installer to make changes to the computer. Click "Yes" to proceed.

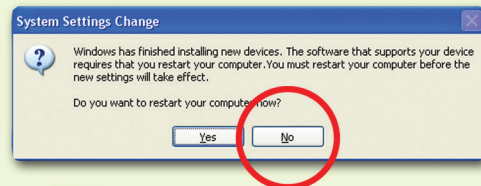


3. The installer will guide you through the rest of the process. **Follow all of the instructions.**

4. You may be asked if you want to install software from Diagnostic Instruments. Click "Install" or "Continue Anyway" to proceed.



5. If you are asked if you want to restart your system, click "No." You will restart later in step 7.



6. When asked to connect the USB key/dongle, make sure it is firmly connected to a USB port.



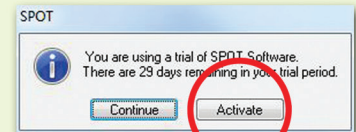
7. Click the "Restart" button to restart your computer.



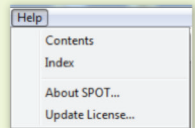
8. Double-click the SPOT Software 5.2 icon on your desktop.



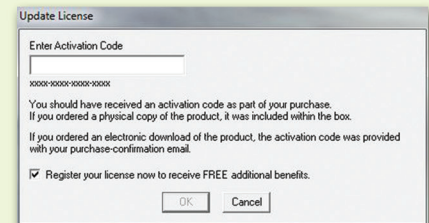
9. SPOT Software will display the trial warning box. Click the "Activate" button.



If SPOT Software starts up fully without displaying the trial warning box, use the "Update License" command from the Help menu.



10. In the next window, enter your activation code and click OK. The code can be found on the front of this guide or, for electronic downloads, in the purchase-confirmation e-mail*.



*The e-mail activation codes work only with the license ID shown in the e-mail. You must use the USB key/dongle associated with that license. If you have more than one USB key/dongle, see "USB Key/Dongle Identification" on the back page.

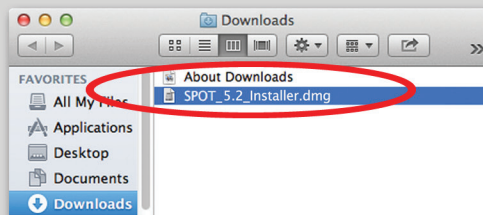
11. The installation of SPOT Software is now complete.



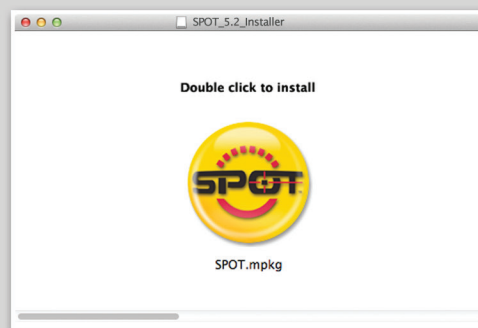
Mac users start here:

(Screen shots are representative only. Actual dialogs will vary depending on your system.)

1. Double-click the disk image file that you downloaded, or insert the SPOT Software CD into your computer's CD-ROM drive and double-click the disk image file for the SPOT installer.



2. Double-click the SPOT icon (Installer package). The installer will guide you through the rest of the process. **Follow all of the instructions.**

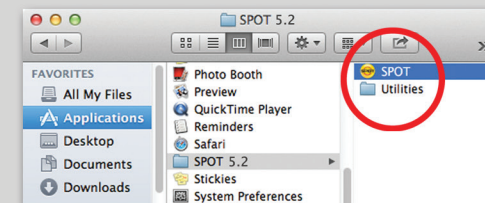


3. Your computer will restart at the end of installation. After that, make sure your USB key/dongle is firmly connected to a USB port.

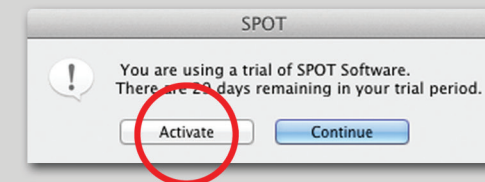


Mac users continue

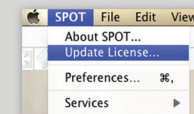
4. In the Finder, go to the Applications folder, find the "SPOT 5.2" folder, and double-click the "SPOT" application.



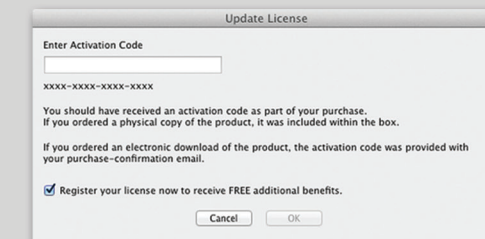
5. SPOT Software will display the trial warning box. Click the "Activate" button.



If SPOT Software starts up fully without displaying the trial warning box, use the "Update License" command from the SPOT menu.



6. In the next window, enter your activation code and click OK. The code can be found on the front of this guide or, for electronic downloads, in the purchase-confirmation e-mail*.



*The e-mail activation codes work only with the license ID shown in the e-mail. You must use the USB key/dongle associated with that license. If you have more than one USB key/dongle, see "USB Key/Dongle Identification" on the back page.

7. The installation of SPOT Software is now complete.