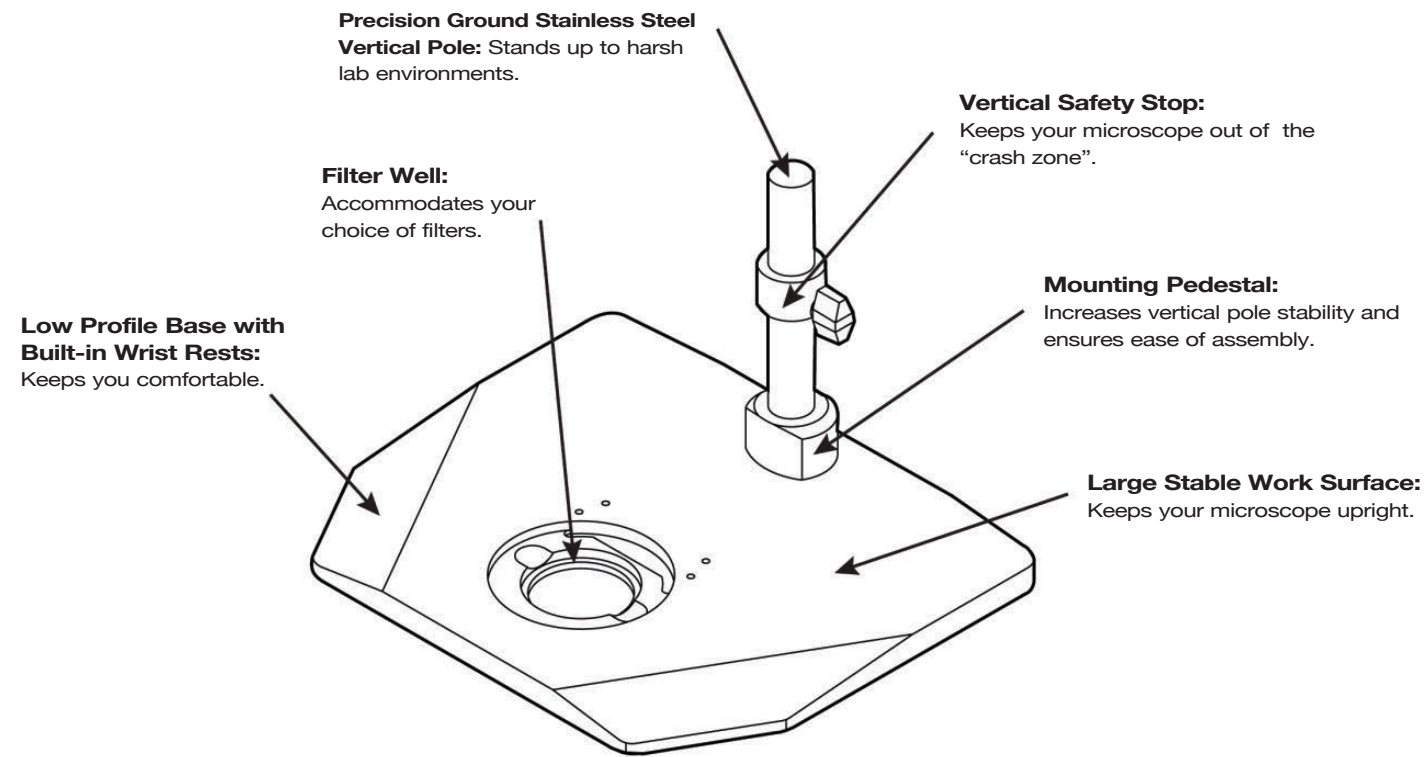


TLB 1000 Series Features



The complete TLB Series

3000
TLB Series



Fiber Optic Transilluminating Stereo Microscope Stand

The TLB3000's large work area and sliding, tiltable mirror make it an economical and versatile choice for general brightfield use, as well as many darkfield applications.

4000
TLB Series



20 Watt Transilluminating Stereo Microscope Stand

The TLB4000's large work area combined with its built-in 20 watt illuminator make it an economical and versatile choice for the crowded lab environment.

Illuminator
Options



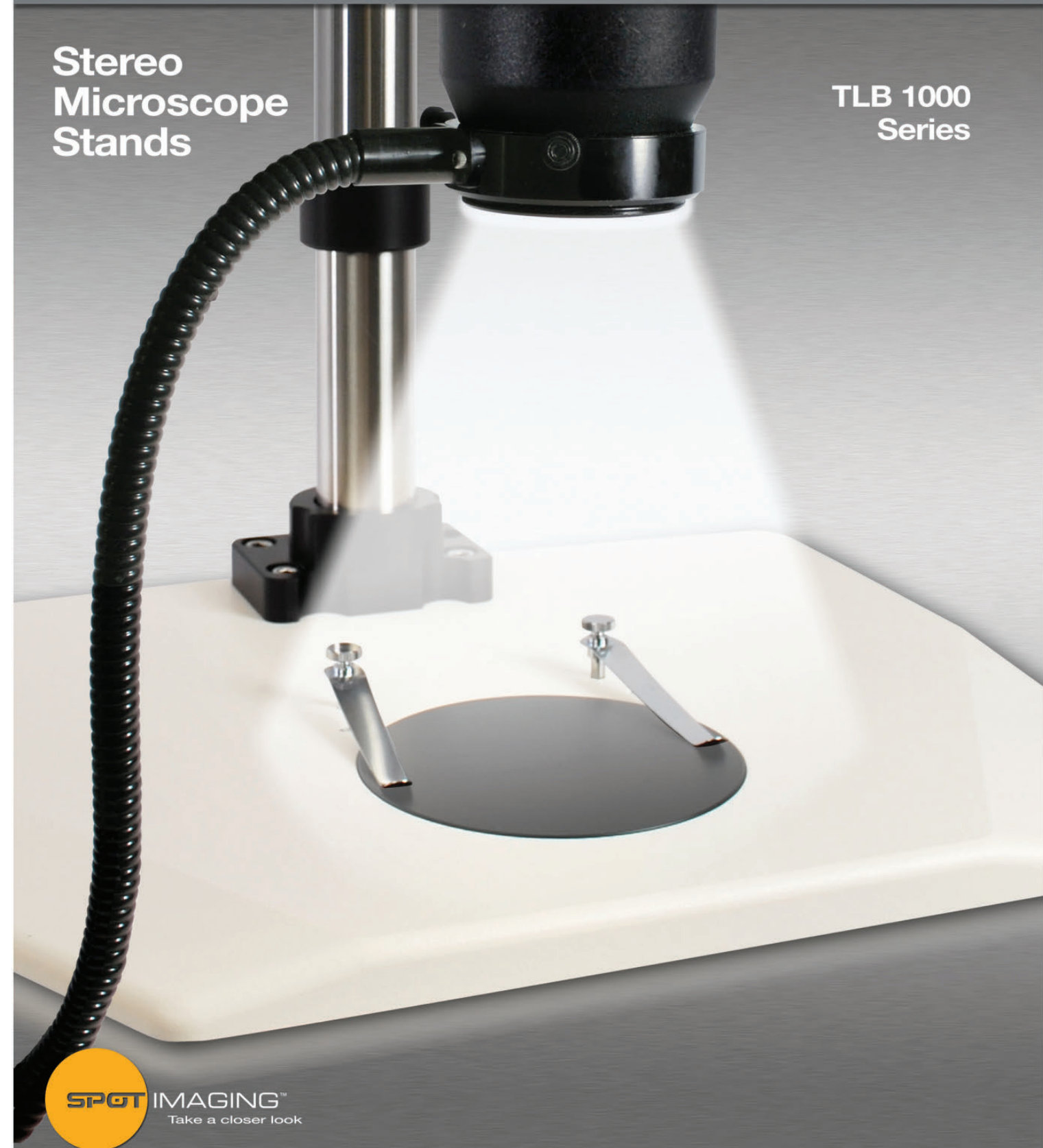
Great selection of optional Illuminators available

Using the best manufacturer's of stand-alone illuminators, we offer the halogen based Volpi® NCL-150 and Intralux. For LED lighting we have the G-Lighting®



Stereo Microscope Stands

TLB 1000 Series



1000
TLB Series

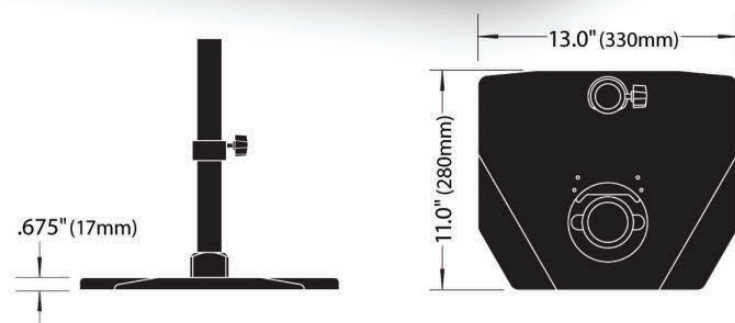
TLB1000 Sturdy Stereo Microscope Stand

Sturdy Stereo Microscope Stand

Features of the TLB1000

- **Large, stable work surface**
- **Low profile with built-in wrist rests**
- **Ideal stand for large stereo microscopes with camera systems**

This stand is a more stable version of the standard stand that is offered with most stereo microscopes. When a camera system is added to most stereo microscopes, the combination becomes top heavy. Starting with the TLB1000 lessens the fear that an accidental bump could knock over the camera-microscope combination.



TLB1000 Sturdy Stereo Microscope Stand

Standard Equipment	Ordering TLB 1000 Series Systems	Part Number
1 Base	Leica	
1 Vertical mounting pole	Leica MZ, MS, GSZ series, accepts 450 171 or 450 299 columns (column NOT included)	TLB1026
1 Vertical stop	Leica S6D, S8 APO (column NOT included)	TLB1026
1 Black & white contrast stage plate (100mm DIA)	Meji	
2 Stage clips	Meji EMZ-1 (20mm Ø x 406mm mounting column)	TLB1016
	Nikon	
	Nikon SMZ-U, SMZ-10A, SMZ645, SMZ660, SMZ800 (32mm Ø x 406mm mounting column)	TLB1019
	Nikon SMZ1500, SMZ1000, SMZ-10	TLB1019
	Olympus	
	Olympus SZX, SZH, SZ with SZ-STS focus mount (32mm Ø x 254mm mounting column)	TLB1018
	Wild	
	Wild (25 mm Ø x 406 mm mounting column)	TLB1007
	Zeiss	
	Zeiss Stemi series, SV6, SV8, SV11, SR, DR, DRC (32mm Ø x 406mm mounting column)	TLB1006

Weight Specifications

Base weight: 13.75 lbs. (6.25 kg)
Shipping weight: 16 lbs. (7.3 kg)

Available Options

Custom length vertical mounting poles
TLB96TP Top plate option for microplate support (while supplies last)



Black-white contrast plate and stage clips



Mounting Pedestal: Increases vertical pole stability and ensures ease of assembly.

