



INSTALLATION GUIDE

SPOT 5.3 BASIC Software



Imaging Software for Microscopy and Macro-Photography



**IF YOU ALSO PURCHASED SPOT ADVANCED SOFTWARE
OR ANY SPOT ADVANCED SOFTWARE MODULE:**

This guide and the activation codes below are for **SPOT Basic Software**. **SPOT Advanced Software and SPOT Advanced Software Modules come with their own guide and activation codes.**

For each computer, use the appropriate guide for the product you wish to install.

SPOT Basic Software

License ID:

SPOT Basic Software

Activation Codes:



IMAGING™
Take a closer look

SPOT 5.3 SOFTWARE GUIDE

CONTENTS:

MINIMUM SYSTEM REQUIREMENTS	1
BEFORE YOU INSTALL.....	1
DO YOU HAVE A CD DRIVE?	2
WINDOWS COMPUTER	3-4
MAC COMPUTER.....	5-6
SOFTWARE QUICK START GUIDE.....	7-9

SPOT 5.3 BASIC Software



Imaging Software for Microscopy and Macro-Photography

This installation guide is for SPOT Basic Software. See the SPOT Advanced Software installation guide to install SPOT Advanced Software.

Minimum System Requirements

Windows: 7 SP1, 8.1, 10
(32-bit and 64-bit)

Mac: OS 10.8 to 10.12

Windows: 1 GHz Pentium 4
(or equivalent x86 SSE2 processor)
or greater, 2 GB RAM or greater

Mac: 2 GB RAM or greater

Before You Install

- If you are upgrading from SPOT 4.5 Software or later, and you are installing SPOT 5.3 Software on a different computer, you can transfer your calibrations and reticles from the old computer to the new one. On the old computer, start the SPOT Software and use the Setup menu to access the Calibrations or Reticles dialogs. Then, press the “Export” button to export the settings to a file. On the new computer, start SPOT 5.3 Software, use the Setup menu to access the same dialogs, and press the “Import” button to import the file(s) that you saved.
- **Ensure you have administrative privileges to install and configure software on the target computer. If you need help, contact your IT department.**
- Close any applications that are running.
- If you have a SPOT camera, make sure it is available, in case the installer asks you to connect it during the installation.
- **DO NOT RUN ANY VERSION OF SPOT SOFTWARE UNTIL AFTER RESTARTING THE COMPUTER AT THE END OF INSTALLATION.**

Note: If you have an earlier version of SPOT Software installed on your computer, it will still be available for use after you install the new version.

DO YOU HAVE A CD DRIVE?

If you have a CD drive, locate the SPOT 5.3 install CD that was included in the box with your the Insight CMOS camera. Then follow instructions in this guide on pages 3-4 for Windows, or pages 5-6 for Mac.

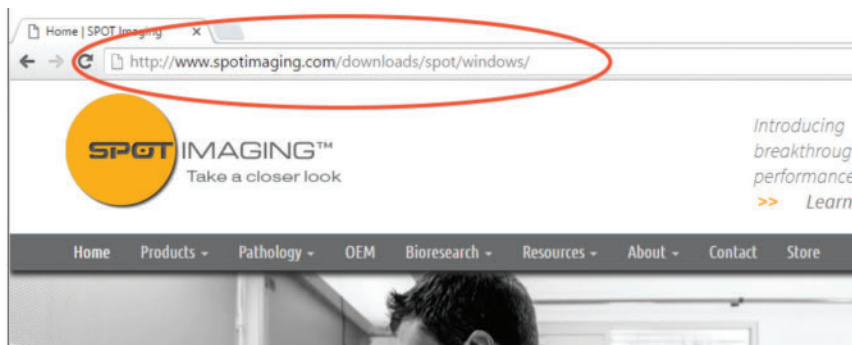
If you don't have a CD drive, follow the instructions below for downloading from the internet.

DOWNLOADING SPOT SOFTWARE FROM INTERNET

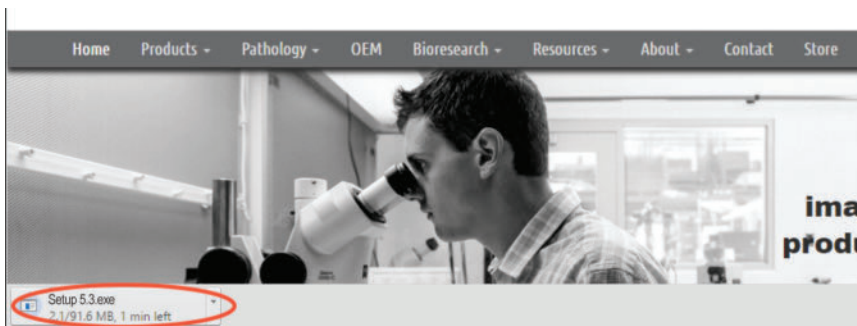
1. Open your internet browser (all screenshots are taken in Google Chrome).
2. In the address bar type the following address:

Mac OSX: <http://www.spotimaging.com/downloads/spot/mac>

Windows: <http://www.spotimaging.com/downloads/spot/windows>



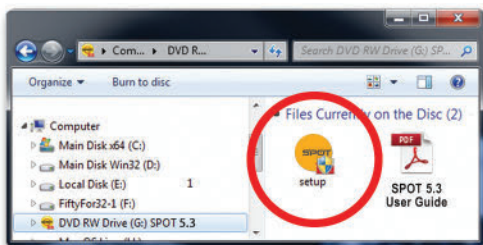
3. Press Enter/Return key once you have completed typing the address.
4. Your browser should start downloading the latest version of SPOT Software.



5. Once complete, click on the downloaded file to start the installation process.

(Screen shots are representative only. Actual dialogs will vary depending on your system).

1. Double-click the installer file that you downloaded, or insert the SPOT Software CD into your computer's CD-ROM drive. The CD-based installer should launch automatically. If it does not launch, double-click the "setup" application on the root of the CD.

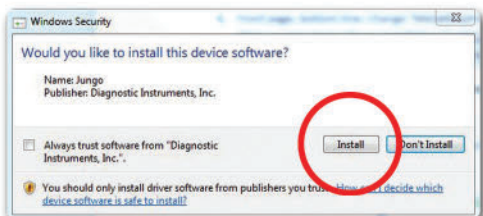


2. Some computers will ask you to allow the installer to make changes to the computer. Click "Yes" to proceed.



3. The installer will guide you through the rest of the process. **Follow all of the instructions.**

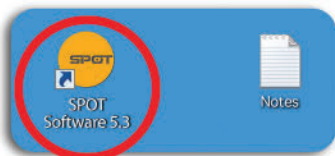
4. You may be asked if you want to install software from Diagnostic Instruments. Click "Install" or "Continue Anyway" to proceed.



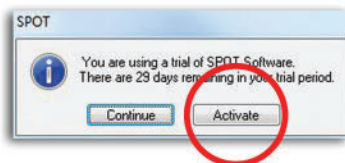
5. Click the “Restart” button to restart your computer.



6. Double-click the SPOT Software icon on your desktop.

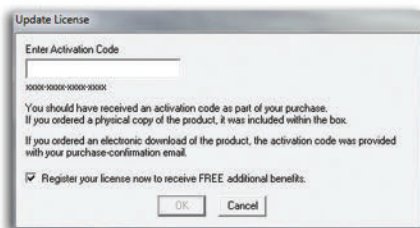


7. SPOT Software will display the trial warning box. Click the “Activate” button.



8. In the next window, enter your activation code and click OK.

The activation code can be found on the front of this Installation guide.



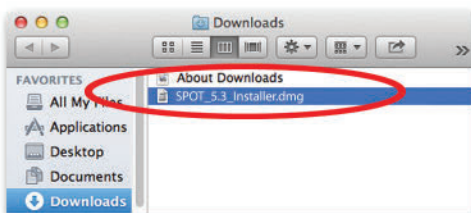
9. The installation of SPOT Software is now complete.
10. Register your SPOT camera and software to activate your warranty and receive the benefits associated with your purchase. <http://www.spotimaging.com/resources/registration/>



MAC USERS START HERE:

(Screen shots are representative only. Actual dialogs will vary depending on your system).

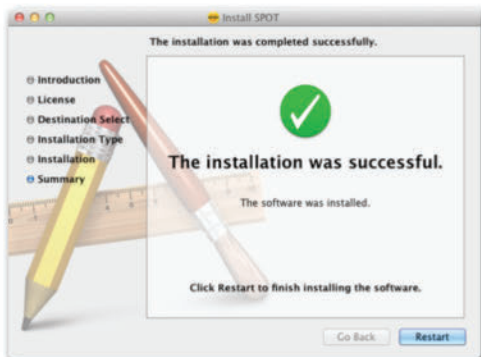
1. Double-click the disk image file that you downloaded, or insert the SPOT Software CD into your computer's CD-ROM drive and double-click the disk image file for the SPOT installer.



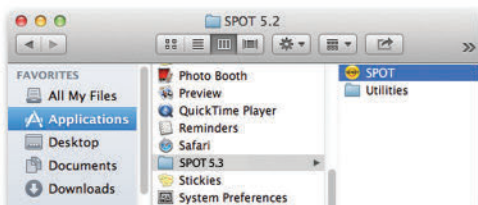
2. Double-click the SPOT icon (Installer package). The installer will guide you through the rest of the process. Follow all of the instructions.



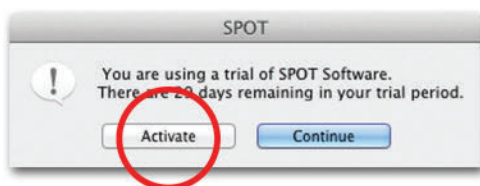
3. At the end of the installation, your computer will restart.



4. In the Finder, go to the Applications folder, click the "SPOT Software" folder, and drag the SPOT application icon to your dock. Double click the SPOT icon to open SPOT Software.

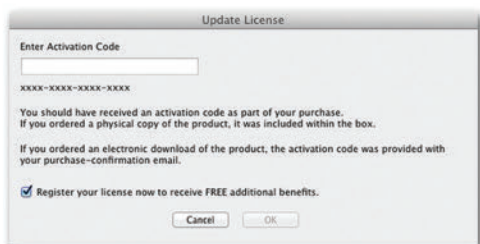


5. SPOT Software will display the trial warning box. Click the "Activate" button.



6. In the next window, enter your activation code and click OK.

The activation code can be found on the front of this Installation guide.



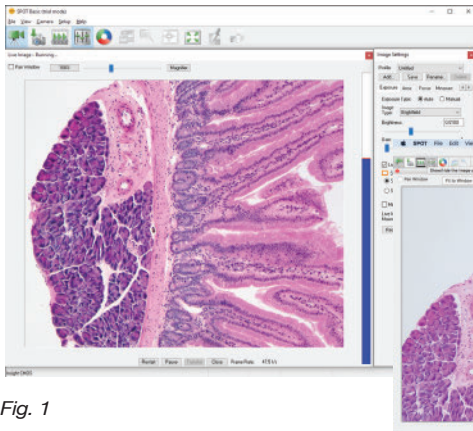
7. The installation of SPOT Software is now complete.
8. Register your SPOT camera and software to activate your warranty and receive the benefits associated with your purchase.
<http://www.spotimaging.com/resources/registration/>

QUICK START GUIDE

Steps to acquire and save your first image

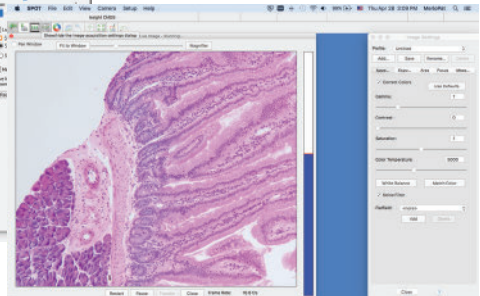
1. Launch SPOT Software and view the live image displayed by your SPOT camera. (Fig.1)

(Screen shots are representative only. Actual dialogs will vary depending on your system).



Windows

Fig. 1



mac OS

2. Focus and position your specimen using the controls on your microscope.

3. Locate the “White Balance” icon in the menu on the top of your screen. (Fig. 2) Make sure there is some white in your image (like a clear area of your slide). Click the White Balance button. The color of the specimen in the live image should now match what you see through the eyepieces.



Fig. 2

4. Locate the menu along the top of the screen and click on the camera icon. (Fig. 3)



Fig. 3

QUICK START GUIDE CONTINUED

5. The live window will automatically close and your captured image will be displayed. (Fig. 4).

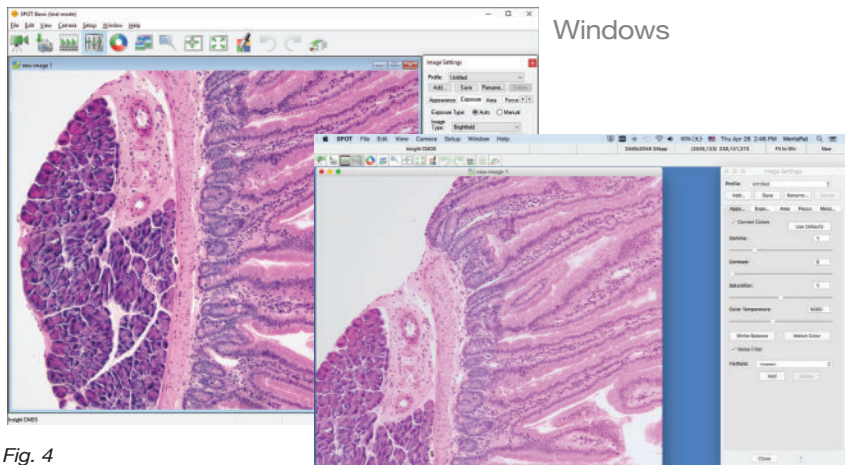


Fig. 4

mac OS

6. With the captured image selected, open the File menu and choose Save (Fig. 5).

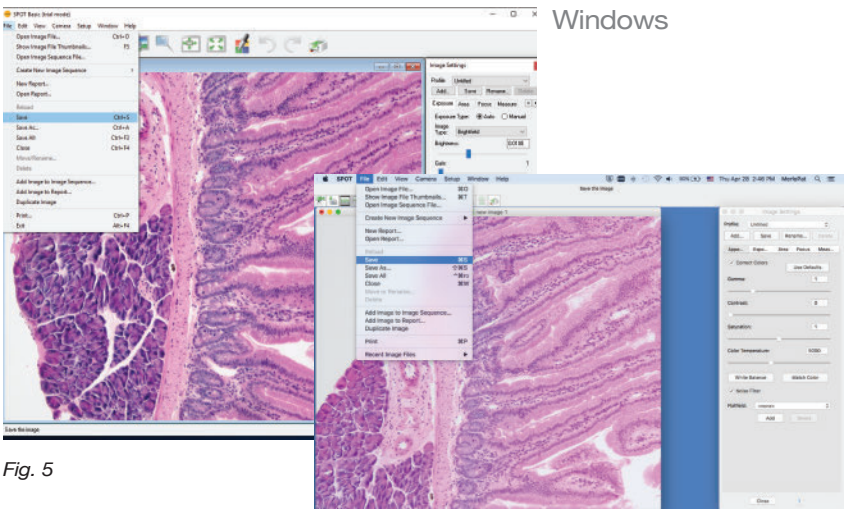


Fig. 5

mac OS

QUICK START GUIDE CONTINUED

7. After the Save As window appears, choose the desired location and file name for your image, then click the Save button. (Fig. 6)

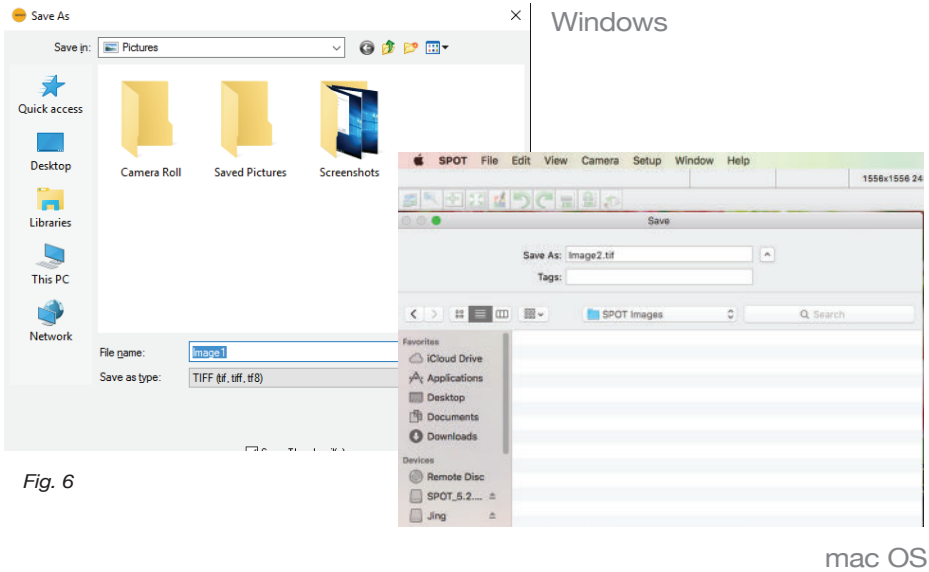


Fig. 6

mac OS

8. Congratulations! You have captured your first image with SPOT Software!

9. To return to the live image, click on the video camera icon. (Fig. 7)



Fig. 7

The unauthorized duplication or distribution of this software or documentation is an infringement of Diagnostic Instruments, Inc. rights to the software and may be subject to criminal and/or civil penalties.



6540 Burroughs Avenue • Sterling Heights • MI • 48314-2133
Toll free: 866.604.SPOT • Phone: 586.731.6000 • Fax: 586.731.6469
www.spotimaging.com