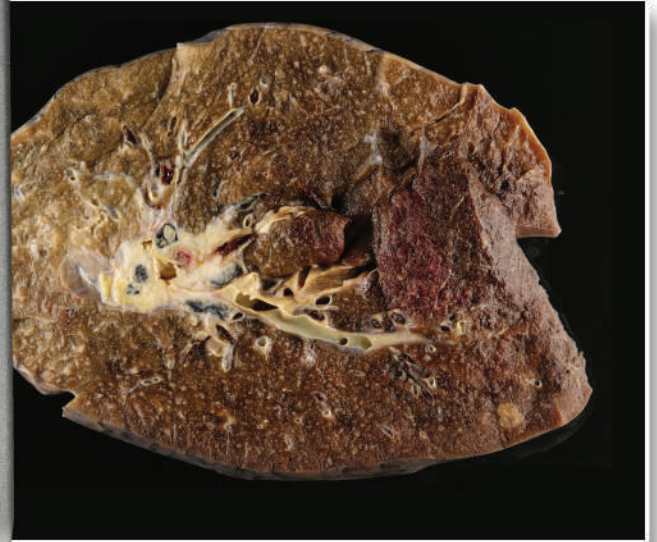




SPOT IMAGING™
Take a closer look

SPOT G8-Z20 4K UHD Grossing Camera

SPOT G8 Grossing Camera



Get a Camera Designed for Pathology...

- Streamline Workflow
- Auto-Exposure, Auto Focus
- Excellent 4K UHD Images
- 20X Optical Zoom, 4X Digital Zoom
- Telepathology Interface
- Easy Pre-Calibrated Measurement
- Professional Annotations
- Video Recording



*Sealed housing
and optical window
ensure easy cleaning.*

SPOT Imaging
6540 Burroughs Avenue
Sterling Heights • MI
48314-2133
phone: 586.731.6000
fax: 586.731.6469

SPOT G8 Products

PathStand

- Central stand-alone imaging station
- Publication quality
- Adjustable LED Lighting
- Shadowless background

APPLICATIONS:

- Surgical Back Bench
- Frozen Section
- Gross Dissection Mapping



PathMobile

- Mobile Grossing System
- Cordless, >6 Hr battery operation (>8 Hr. Optional)
- 8 axis adjustable arm

APPLICATIONS:

- Surgical Back Bench
- Autopsy
- Classroom
- Multi-room support

PathStation

- In-Hood, In-Process Gross Imaging
- Optimized workflow saves time

APPLICATIONS:

- Frozen Section
- Gross Dissection Mapping



Specifications

Model	G8-Z20
Sensor	
Resolution	8.3 Mp (4K UHD)
Active Pixels	3840 x 2160
Optical Format	1/2.5"
Shutter Type	Rolling plus Slow Global
Bit Depth	12 bit / channel ADC (24 bit RGB file)
Camera	
Macro Lens	20x Optical Zoom plus 4x Digital zoom
Focus	Auto Focus w/ Manual Override
Exposure	Auto Exposure w/ Manual Offset
Gain	Auto gain control: 0 to 48 dB
Computer Interface	USB 3.0 plus ComPort (RS232)
Tripod Mount	1/4-20 thread
Weight	1.5 lbs (0.68 kgs.)
Size (Including Diopter)	3.23" (82 mm) W x 3.42" (87mm) D x 4.33" (110mm) H
Power Consumption	25 Watts to Control Box
Operating Temperature / Humidity	(-5°) to 60°/20% to 80%
Storage Temperature / Humidity	(-20) to 60 °C /20 to 95 %
Certifications	CE, FCC Class A, EN60950 RoHS
Live Preview	
16:9 Format (fps)	4K UHD @ 29.97 fps
Image Capture	
Max Capture Resolution	2160p -4K UHD
Resolution	3840 x 2160
SPOT Software Compatibility	
PathSuite 3.0 /WIN OS 7, 8, 10	Optimized Pathology workflow interface, with Image Acquisition Module, Image Viewer, Image Editor, Central SQL/RDBMS Image Archive, LIS/EMR Transfer Interface, Telepathology Interface
OS Supported: WinOS	