

# Is Your Olympus Camera Unsupported on WIN 10 OS?

Get Fully Supported on  
  
Windows 10

See why Pathology Departments are switching to SPOT Imaging...



## SPOT Makes Pathology Easy...

- **Easy Computer Connection**  
Single USB 2/3 Cable Eliminates Plug-In cards and Control boxes
- **Best Image Quality**  
Advanced image processing eliminates post processing
- **Most Responsive Camera**  
Fastest Frame Rates and Auto-Brightness Tracking
- **Streamlined Pathology Workflow**  
From Pathology optimized PathSuite software
- **Advanced Image Archive Management**  
SQL Database and LIS Interface
- **Remote Procedure Support**  
PathCast Telepathology Interface
- **Camera Models to Meet Your Needs**  
Broad Line of Camera Models



All our Cameras Support  
**Windows 10**

*The Best Pathology Cameras Available!*



# Check out SPOT's newest line of cameras!

Idea™ 5Mp, 3Mp



**APPLICATIONS:**

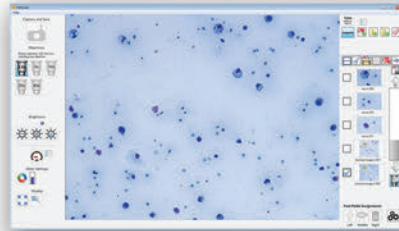
- Entry Level Microscopy
- Case Sign-out
- Microbiology



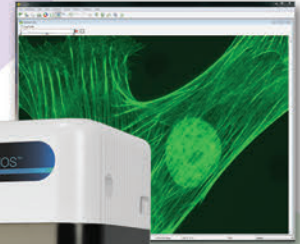
Insight™ 12Mp, 5Mp  
4k UHD and 1080p HD

**APPLICATIONS:**

- FNA / EBUS ROSE Consult Support
- Frozen Section
- Subspecialty Consult
- Case Sign-out
- Tumor Board
- Microbiology



SPOT PathSuite Software



RT sCMOS™ 5Mp

**APPLICATIONS:**

- Fluorescence Immunohistochemistry
- Case Sign-out
- Phase
- DIC

SPOT Specifications					
	Idea 3.0	Idea 5.0	Insight 5.0	Insight 12.0	RT sCMOS 5.0
Sensor Type	Color	Color	Color	Color	Monochrome
Live Res/ Frame Rate	1024 x 768 @ 12 fps	1296 x 972 @ 7 fps	2448 x 2048 @ 45+* fps	4096 x 3000 @ 29+* fps	2448 x 2048 @ 36 fps
Live 16:9 / Frame Rate	N/A	N/A	2.0 Mp @ 60+* fps (1080p HD)	8.0 Mp @ 30+* fps (4K UltraHD)	N/A
Captured Resolution	2048 x 1536 3.1Mp	2592 x 1944 5.0Mp	2448 x 2048 5.1Mp	4096 x 3000 12.3Mp	2448 x 2048 5.1Mp
Optical Format	1/2" (4:3)	1/2.5" (4:3)	2/3"	1.1"	2/3"
Std Adapter Mag/ FOV	0.5X / 16.38mm	0.5X / 14.26mm	0.63X / 17.5mm	1.0 / 17.4mm	0.63x / 17.5mm
Wide Adapter Mag/FOV	N/A	N/A	0.55 X 20.0mm	N/A	0.55x / 20.0mm
Shutter Type	Rolling	Rolling	Global	Global	Global
Sensor	CMOS, Color Mosaic, Bayer Pattern	CMOS, Color Mosaic, Bayer Pattern	Sony Pregius	Sony Pregius	Sony Pregius
Lens Mount	C-Mount	C-Mount	C-Mount	C-Mount	C-Mount
Computer Connection	USB 2.0	USB 2.0	USB 3.0	USB 3.0	USB 3.0
Power Supplied	2W from USB cable	2W from USB cable	5W from USB 3.0 cable	5W from USB 3.0 cable	20.5W w/ External P.S.
Read Noise	18.5 e- rms	6.5 e- rms	2.4 e- rms	2.4 e- rms	2.1e- rms
Fluorescence	No	No	Yes	Yes	Yes
Camera Gains	1, 2, 4 and 8	1, 2, 4 and 8	1, 2, 4, 8, 16, 32, 64, 128, 251	1, 2, 4, 8, 16, 32, 64, 128, 251	16, 32, 64, 128, 213
Software Support	PathSuite	PathSuite	PathSuite	PathSuite	PathSuite
	SPOT Adv'd	SPOT Adv'd	SPOT Adv'd	SPOT Adv'd	SPOT Adv'd
	SPOT Basic	SPOT Basic	SPOT Basic	SPOT Basic	SPOT Basic

\*Requires computer GPU w/ >400 GFLOPS for these frame rates (Note: These GFLOPS are typical of recent computers)



6540 Burroughs Ave • Sterling Heights, MI • 48314

Email: [Info@spotimaging.com](mailto:Info@spotimaging.com) • Toll Free: +1 866-604-SPOT • Direct: +1 586-731-6000 • Website: [www.spotimaging.com](http://www.spotimaging.com)

PN: Win10 Update\_Flyer