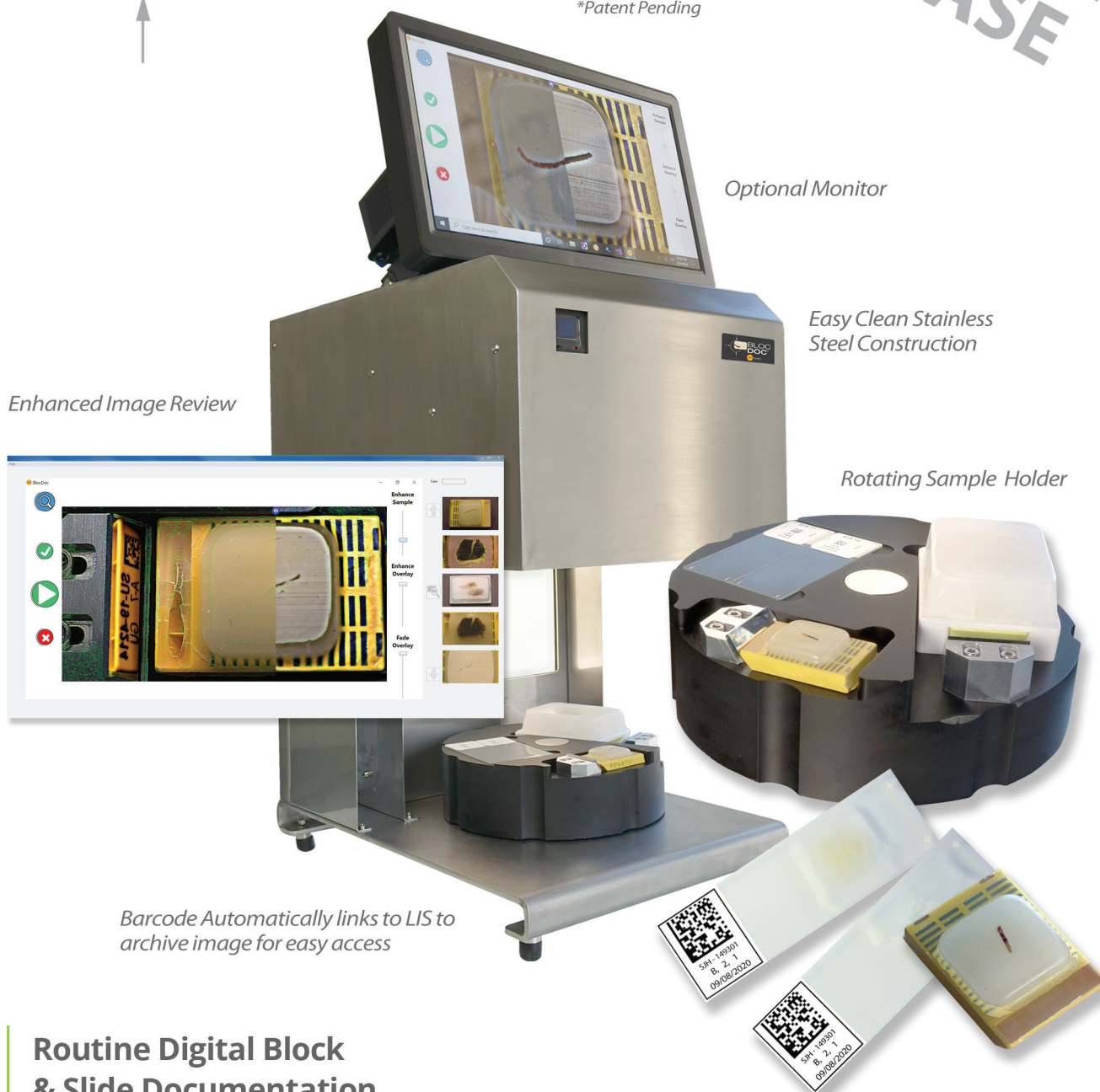


PRELIMINARY  
RELEASE

BLOC  
DOC™

\*Patent Pending



Optional Monitor

Easy Clean Stainless  
Steel Construction

Enhanced Image Review

Rotating Sample Holder

Barcode Automatically links to LIS to  
archive image for easy access

## Routine Digital Block & Slide Documentation

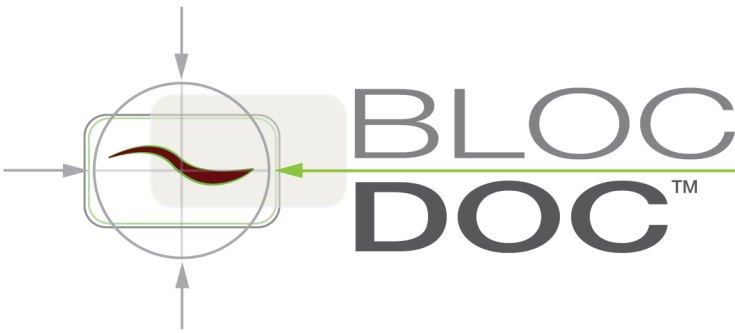
- Addresses Accreditation Check-List Requirements
- Saves Time and Eliminates Doubts
- 2-Second Image Capture to Patient File
- Provides Pathologist an Enhanced Digital Review of:
  - Cut Surface of Block
  - Below Surface Tissue in Block
  - Raw Slide Tissue Levels

Supports All Sample Types:

- Standard Mount
- Whole Mount



SPOT IMAGING™  
Take a closer look



# Addresses the Issues

## ACCREDITATION CHECKLIST

### You Can't Diagnose What You Don't See!

Pathology Societies around the world have recognized that tissue may be missing from the final slide or WSI image impacting the diagnosis made <sup>1</sup>. As a result, Accreditation Checklists <sup>2,3,4</sup> have been updated to include a requirement for a tissue tracking and review process.

### Cost Effective Solutions

Poorly designed solutions lengthen process times making them costly to run. Lab managers have neither budget nor the space to employ additional staff, making the selection of a well thought out solution with streamlined workflows essential.

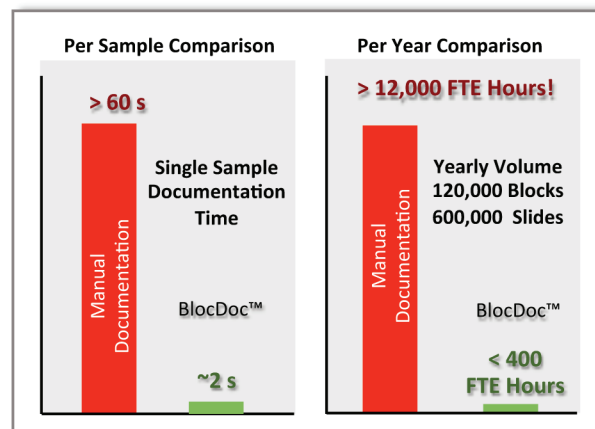
## BLOCDOC'S STREAMLINED WORKFLOW

### Fast Capture

BlocDoc™ has been specifically designed to support the documentation of standard and whole mount blocks and slides. Changing between samples is just a quick rotation of the BlocDoc sample holder.

Once indexed, the cassette or slide is inserted and the capture button is triggered. The BlocDoc captures the barcode, as well as, a series of enhanced images of the cut-surface and the sub-surface tissue.

The images are automatically filed to the SPOT SQL database using the barcode fields for case, specimen, block and slide number. The result is an incredibly fast and automated 2-second sample documentation time.



### Realize the Digital Pathology Promise

- Increase Diagnostic Certainty
- Support Remote Pathologist
- Consistently Track Tissue: Origin to Diagnosis
- Increase Productivity and Lab Utilization
- Eliminate Operator Frustration
- Maintain Personnel Focus

1-Filippo Fraggetta, 1 Yukako Yagi, 2 Marcial Garcia-Rojo, 3 Andrew J. Evans, 4 J. Mark Tuthill, 5 Alexi Baidoshvili, 6 Douglas J. Hartman, 7 Junya Fukuoka, 8 and Liron Pantanowitz, 7 The Importance of eSlide Macro Images for Primary Diagnosis with Whole Slide Imaging: J Pathol Inform. 2018; 9:46 Published online 2018 Dec 24. doi: 10.4103/jpi.jpi\_70\_182

2-Liron Pantanowitz, MD; John H. Sinard, MD, PhD; Walter H. Henricks, MD; Lisa A. Fatheree, BS, SCT (ASCP); Alexis B. Carter, MD; Lydia Contis, MD; Bruce A. Beckwith, MD; Andrew J. Evans, MD, PhD; Christopher N. Otis, MD; Avtar Lal, MD, PhD; Anil V. Parwani, MD, PhD Validating Whole Slide Imaging for Diagnostic Purposes in Pathology: Archives of Pathology Laboratory Medicine—Vol 137, December 2013; p.-1710-1722:

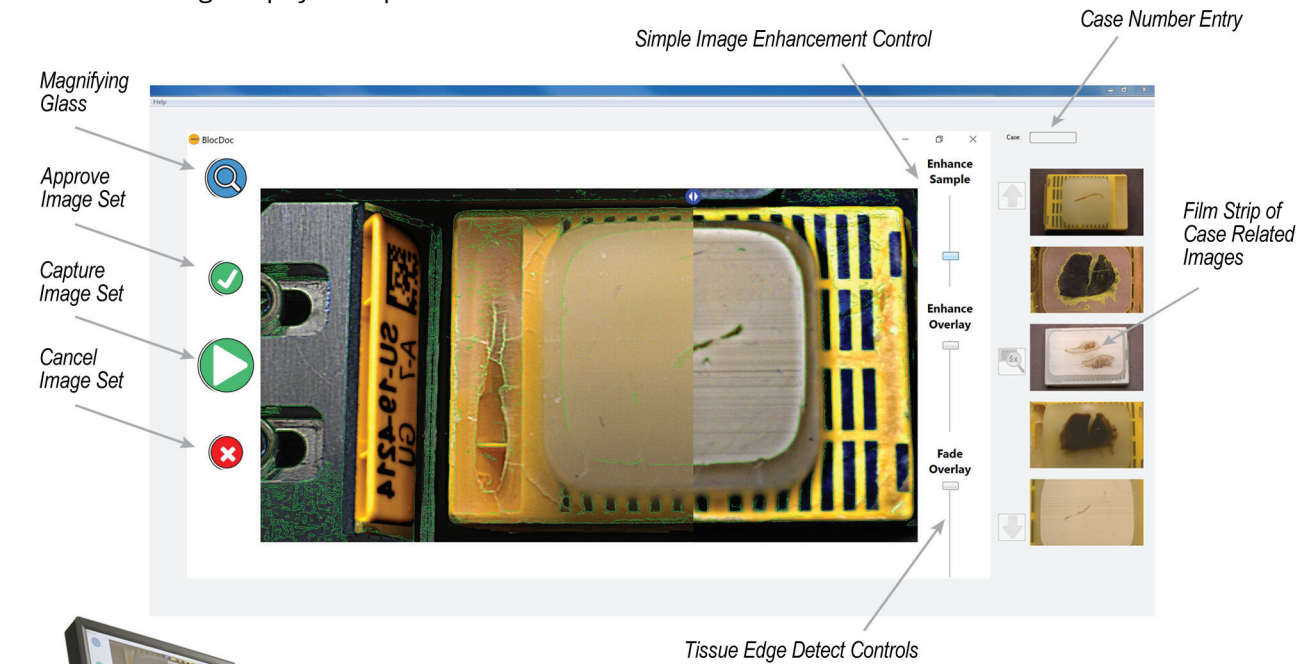
3- Peter Hufnagl, Ralf Zwönitzer, Gunter Haroske; Guidelines Digital Pathology for Diagnosis on (and Reports of) Digital Images Version 1.0 Bundesverband deutscher Pathologen e.V. (Federal Association of German Pathologist) diagnostic pathology 2018, 4:266

4- Simon Cross, Peter Furness, Laszlo Igali, David Snead, Darren Treanor Best practice recommendations for implementing digital pathology: The Royal College of Pathologists; Unique document number G162, Date active: January 2018.

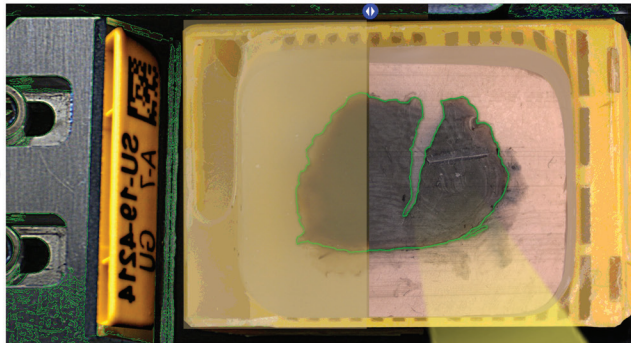


# Enhanced Images Even Better than Physical Samples

BlocDoc's enhanced images and easy to use review interface provide the pathologist with a virtual solution that is better than having the physical specimen block in hand.



Unenhanced Image



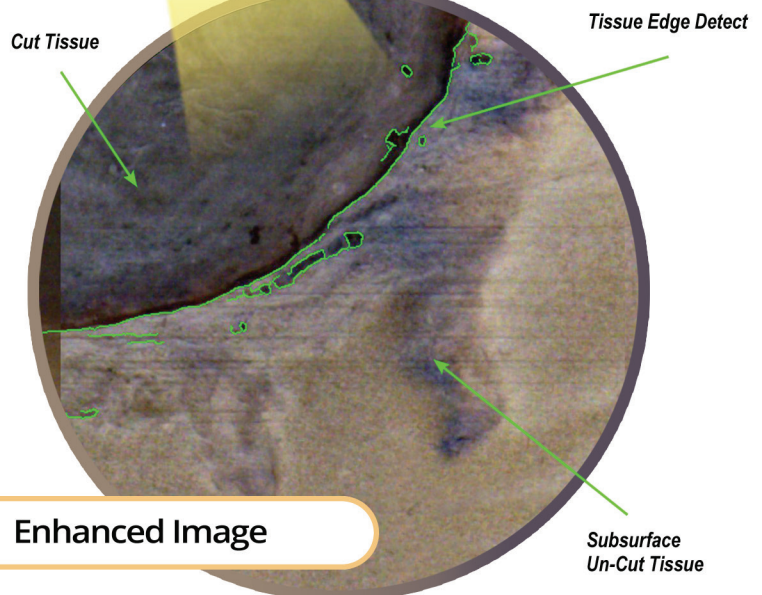
## Extensive Sample Documentation

BlocDoc's patented\* imaging process provides enhanced views of the block's cut surface as well as views of the subsurface, uncut tissue. This eases the visualization of what tissue made it to the slide and what tissue is still in the block. Additional images provide documentation of the raw unstained slide's sample ribbon supporting reviews of each tissue level before and after staining.

The BlocDoc system not only makes the tissue review process more convenient it makes the review more clear.

BlocDoc is purpose designed to save your lab time and operating budget.

*\*Patent Pending*



Enhanced Image

## Clinical Team Needs:

Team Collaboration

Streamlined Workflows

Clear Professional Presentations

Support of Existing Infrastructure

Easy to Budget

Stepwise Implementation

## PathSuite Provides:

Central Archive and Telepathology Links

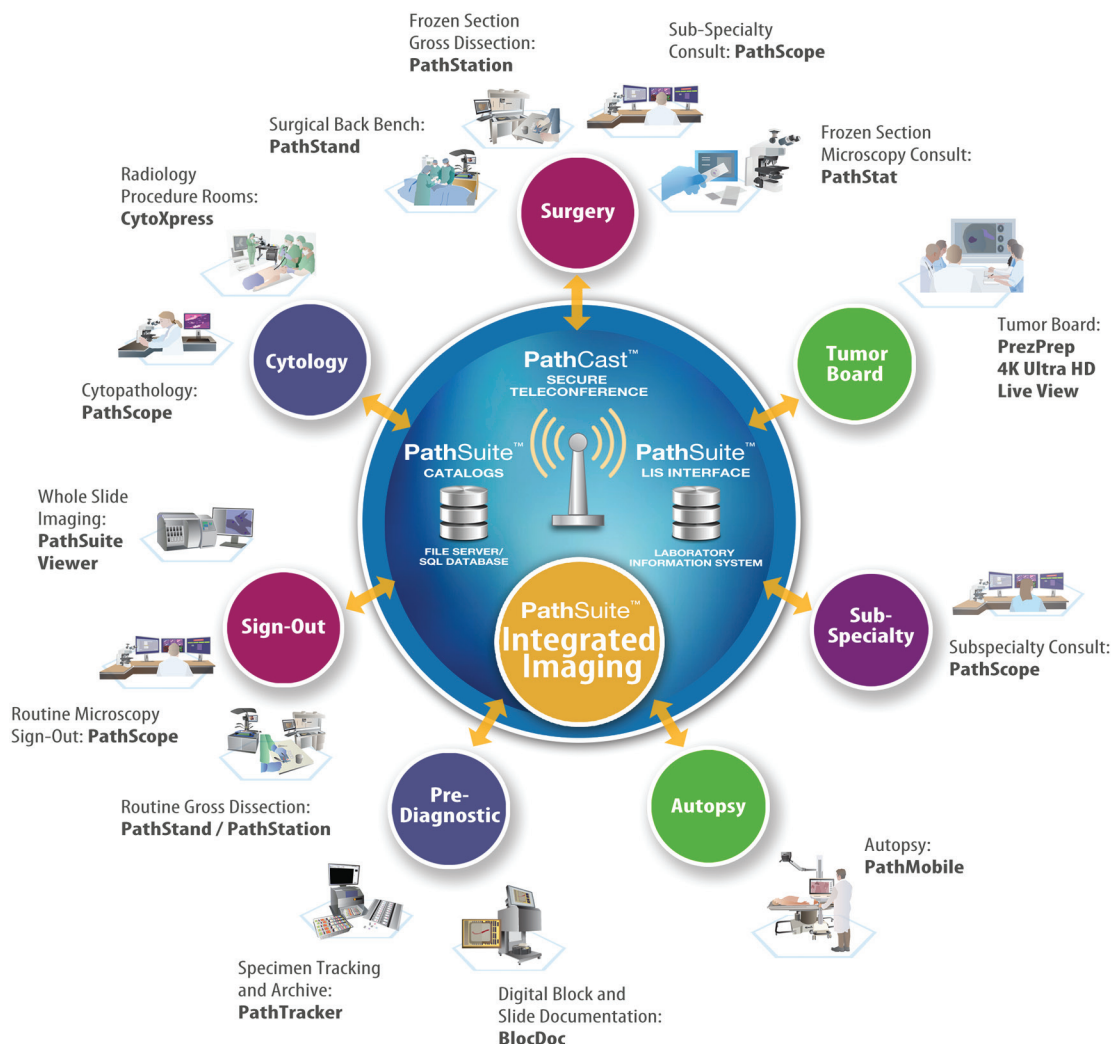
Purpose Designed Hardware and Software

Great Images, Clean Layouts

Configurable Hardware and Software

Budget Positive ROI's

Expandable, Interconnected, Modular Solutions



SPOT Imaging • 6540 Burroughs Avenue • Sterling Heights • MI • 48314-2133

phone: 586.731.6000 • fax: 586.731.6469

BlocDoc Bro Rev 9