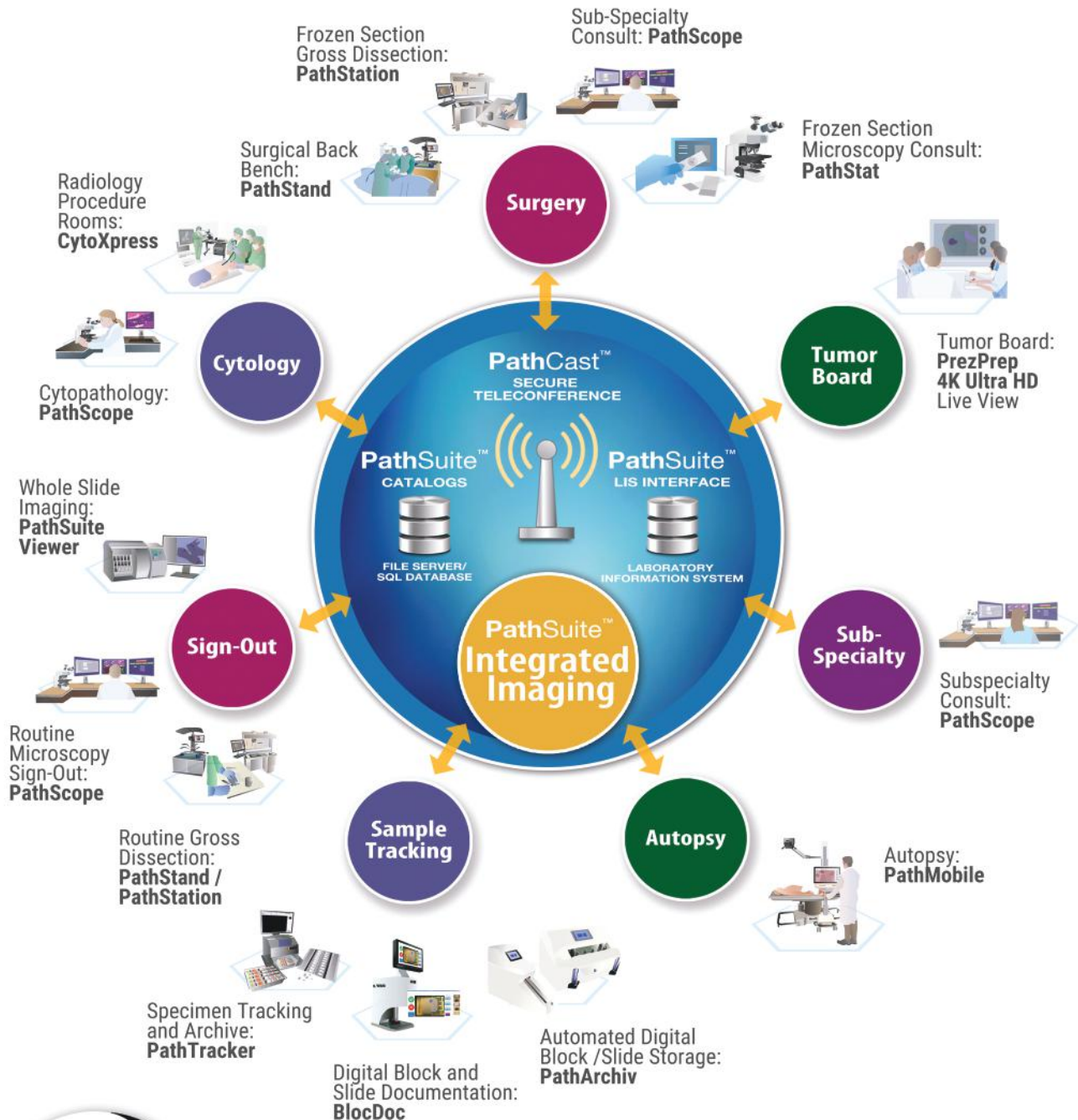




# The SPOT Pathology Imaging Environment



*SPOT provides pathology teams a streamlined imaging environment that securely captures and manages professional images supporting the LIS in presenting the whole case.*

**What Does Your Digital Pathology Environment Look Like?**

## Software Solutions



### PathSuite 3.0- Image Acquisition and Management Software

- Applications: ROSE, Intra-Operative Consult, Gross Dissection, Sign-Out, Tumor Board, Autopsy
- Standardized acquisition and archive software configurable for each pathology imaging application
- Streamlined imaging workflow with auto-archiving complimentary image support for LIS interfaces

### PathCast™- Secure Teleconferencing Software

- Applications: ROSE, Frozen Section, Sub-Specialty Consult, General Questions/Social Distancing
- Secure system architecture ensure hospital security and availability of conferencing resources
- Provides enhanced digital image to case file for ready access to pathologists

## Microscopy Imaging Solutions



### CytoXpress™- Telepathology Supported ROSE Consult Imaging Systems

- Applications: Mobile ROSE Consult Support
- Full height adjustable, battery-operated cart with secure mounting of microscope and computer
- Provides simple secure telepathology interface allowing fast 5-minute pathologist consult attendance

### PathStat™- Telepathology Supported Intra-Operative Consult Imaging Systems

- Applications: Microscopy and Gross Intra-Operative Consult Support
- Telepathology enabled gross and microscopy imaging system
- Provides simple secure telepathology interface allowing fast 5-minute pathologist consult attendance

### PathScope™- Microscopy Imaging Systems

- Applications: Microscopy slide examination, Tumor Board Presentation, Sub-Specialty Consult
- Full height adjustable, battery-operated cart with secure mounting of microscope and computer
- Provides simple secure telepathology interface allowing fast 5-minute pathologist consult attendance

## Microscope Camera Options



### Insight™ 12 Mp / 4KUHD - Microscopy Camera

- Applications: Live & Captured Brightfield and Fluorescent IHCM, Telepathology, Tumor Board
- Leading performance for speed, resolution and image quality- Market bench mark
- Ideal for Live presentation & telepathology, in addition to image capture and archive



### Insight™ 5 Mp / 1080p HD - Microscopy Camera

- Applications: Live & Captured Brightfield and Fluorescent IHCM, Telepathology
- Leading work-a-day model, excellent speed, resolution and image quality
- Ideal for Live presentation & telepathology, in addition to image capture and archive



### Idea™ 5 Mp - Microscopy Camera

- Applications: Still Image Capture, Brightfield Imaging
- Work-a-day model that provides live preview with good resolution and image quality
- Ideal for Live presentation & telepathology, in addition to image capture and archive



### Idea™ 3 Mp - Microscopy Camera

- Applications: Entry Level Still Image Capture, Brightfield Imaging
- Work-a-day model that provides live preview with good resolution and image quality
- Ideal for entry level still image capture and archive

## Sample Tracking Solutions



### BlocDoc™ : Block & Slide Documentation

- Applications: Completeness of tissue checks | Reference lab receiving documentation
- Automated 2 second image capture and save of cut blocks and slides
- Provides enhanced digital image to case file for ready access to pathologists



### PathTracker™ : In-Process Bulk Barcode Reader

- Applications: In-process sample tracking of bulk sample transfers of slides and blocks
- Saves time, eliminates mistakes and provides visual confirmation of scanned barcodes
- Automatic LIS upload of scanned barcodes



### PathArchiv™ : Sample Archive Management System

- Application: Sample archive management system for slides and blocks
- Automated operations frees up histology technicians and virtually eliminated sample loss
- Dense, inexpensive container and boxing, keeps storage cost effective

## Gross Imaging Solutions



### PathStation™ : In-Hood Gross Imaging System

- Applications: In-process biopsy documentation and intra-operative consult via teleconferencing
- Streamlined imaging workflow with auto-archiving saves pathologists' assistants time
- Professional images easily shared via central , Image repository and teleconferencing interface



### PathStand™ : Stand-Alone, Publication Quality Gross Imaging System

- Applications: Central image workstation with adjustable lighting and specimen backgrounds
- Streamlined imaging workflow with auto-archiving saves pathologists' assistants time
- Professional images easily shared via central , Image repository and teleconferencing interface



### PathMobile™ : Rolling Cart Gross Imaging System

- Applications: Autopsy/Medical Examiner Documentation | Anatomy Lab teaching
- Cordless battery operation and adjustable arm make provides 2.5 cm to 235 cm Full body images
- Streamlined imaging workflow with auto-archiving saves time and ensures secure archive of case images

## Gross Imaging Camera Options



### G20™ : 20.1 Mp Gross Imaging Camera

- Optimum camera for publication quality still image capture
- 20 Mp Image Capture with 720p HD live preview, with 8.3x Optical Zoom, plus 4x Digital Zoom
- Auto exposure and auto focus, hands free, live preview, image capture and auto-save to case file



### G8™ : 4K UHD / 8.25 Mp Gross Imaging Camera

- Optimum camera for in-process documentation, teleconferencing and video recording
- 4KUHD / 8.25Mp Image Capture with 4K UHD live preview, with 20x Optical Zoom, plus 4x Digital Zoom
- Auto exposure and auto focus, hands free, live preview, image capture and auto-save to case file



# The Standard for Pathology Imaging

## Helping Pathology Partners Develop Roadmaps That Provide:

- Professional Images from Streamlined Workflows
- Shared Central Image Archive
- Secure Telepathology Interface
- Synchronized LIS Connectivity

## Based on the Principles of:

- Practical, Budget Positive Solutions that Pay for Themselves
- Integrated, Stepwise Implementation
- Fitting Your Existing Infrastructure of Equipment and Software
- Solid Performance from > 55 Years of Problem-Solving Experience

## Join the Growing List of SPOT Imaging Partners...

**University Hospitals:**

**Community Hospitals:**

**Commercial Pathology Services:**

**DOD & Veterans Hospitals:**

**Provincial Hospitals:**

### SPOT Imaging / Diagnostic Instruments, Inc.

6540 Burroughs Ave.

Sterling Heights, MI USA 48314

Email: info@spotimaging.com Main Phone: +1 (586) 731-6000

Website: spotimaging.com Toll Free: +1 (866) 604-SPOT