



150 BARCODES
 DIRECT TO YOUR **LIS** IN LESS THAN **25 SECONDS!**

PATHTRACKER

PathTracker™

Bulk Barcode Reader

Slide Index Input

Cassette
Basket Input



LIS Manifest
Output

Location	Year	Code	Specimen	Batch	Title
WVMS	17	W0816	A	1	TS1
WVMS	17	W0816	A	2	TS1
WVMS	17	W0816	A	3	TS1
WVMS	17	W0816	A	4	TS1
WVMS	17	W0816	A	5	TS1
WVMS	17	W0816	A	6	TS1
WVMS	17	W0816	A	7	TS1
WVMS	17	W0816	A	8	TS1
WVMS	17	W0816	A	9	TS1
WVMS	17	W0816	A	10	TS1
WVMS	17	W0816	A	11	TS1
WVMS	17	W0816	A	12	TS1
WVMS	17	W0816	A	13	TS1
WVMS	17	W0816	A	14	TS1
WVMS	17	W0816	A	15	TS1
WVMS	17	W0816	A	16	TS1
WVMS	17	W0816	A	17	TS1
WVMS	17	W0816	A	18	TS1
WVMS	17	W0816	A	19	TS1
WVMS	17	W0816	A	20	TS1
WVMS	17	W0816	A	21	TS1
WVMS	17	W0816	A	22	TS1
WVMS	17	W0816	A	23	TS1
WVMS	17	W0816	A	24	TS1
WVMS	17	W0816	A	25	TS1
WVMS	17	W0816	A	26	TS1
WVMS	17	W0816	A	27	TS1
WVMS	17	W0816	A	28	TS1
WVMS	17	W0816	A	29	TS1
WVMS	17	W0816	A	30	TS1
WVMS	17	W0816	A	31	TS1
WVMS	17	W0816	A	32	TS1
WVMS	17	W0816	A	33	TS1
WVMS	17	W0816	A	34	TS1
WVMS	17	W0816	A	35	TS1
WVMS	17	W0816	A	36	TS1
WVMS	17	W0816	A	37	TS1
WVMS	17	W0816	A	38	TS1
WVMS	17	W0816	A	39	TS1
WVMS	17	W0816	A	40	TS1
WVMS	17	W0816	A	41	TS1
WVMS	17	W0816	A	42	TS1
WVMS	17	W0816	A	43	TS1
WVMS	17	W0816	A	44	TS1
WVMS	17	W0816	A	45	TS1
WVMS	17	W0816	A	46	TS1
WVMS	17	W0816	A	47	TS1
WVMS	17	W0816	A	48	TS1
WVMS	17	W0816	A	49	TS1
WVMS	17	W0816	A	50	TS1

- In Process Sample Tracking
- Saves Time And Eliminates Mistakes
- Visual Confirmation of Barcode Scans
- Logs Barcodes Into Your LIS

US Patent: US 11,054,431 B2
 (with International Patents Pending)

PathTracker™

Hand Scanning Batches of Barcodes is Problematic...

Every lab manager and pathology director knows the importance of tracking samples from start to finish. A few losses and your lab's credibility will be in question from both your clinical colleagues as well as your state's regulatory agency.

Best practices dictate "way point" scanning of samples as they traverse histological processing, pathology diagnosis and long term archiving.

While "way point" scanning has helped sample tracking greatly, it has introduced its own issues

related to the number of scans required at each process step and the difficulty of ensuring all cassettes and slides in a basket or index are scanned. The result is mind numbing work and frustrating re-scanning of mismatched manifests.

PathTracker automates this process, eliminating non-value added work and its associated errors.



Bulk Sample Tracking Made Easy

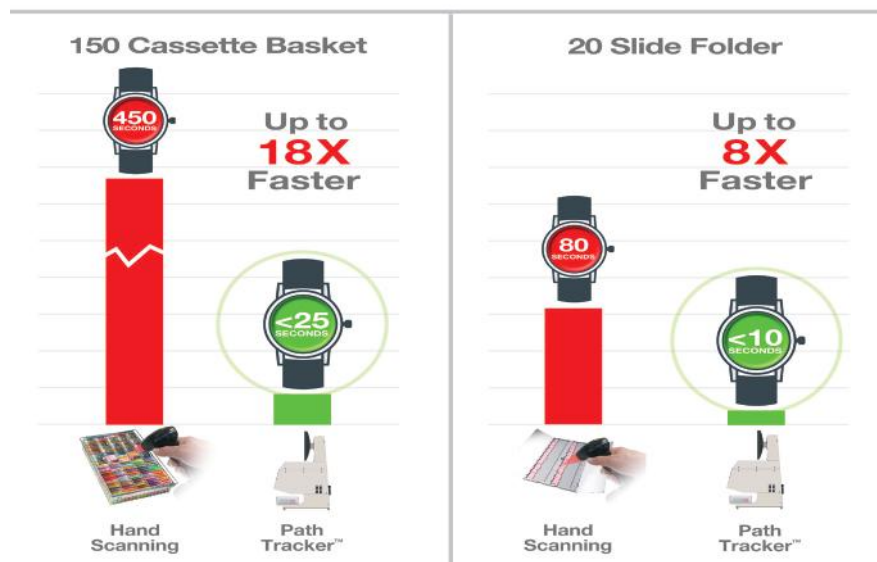
PathTracker replaces laborious and error prone hand scanning of cassette and slides with a single push of a button. PathTracker incorporates patented technology to acquire, process, analyze and log all the barcodes in the field of view.

150 cassette processing baskets are scanned in less than 30 seconds, compared to 7.5 minutes for hand scanning. Slide indexes are completed in less than 10 seconds vs 1 minute 20 seconds for hand scanning.

Critically, you can rest assured that all the cassettes were read and any damaged or poorly printed barcodes are flagged. PathTracker then provides a set of correction tools to automatically or manually correct these barcodes ensuring your production run continues through its processing.

Once approved, PathTracker transfers the data set to your LIS and stores the source image and data set to its backup archive.

Save Time



Realize the Digital Pathology Promise

- Minimize Errors
- Consistently Track Samples: Origin to Archive
- Increase Productivity and Lab Utilization
- Eliminate Operator Frustration
- Maintain Personnel Focus

PathTracker™

Archiving Made Manageable | PathTracker™

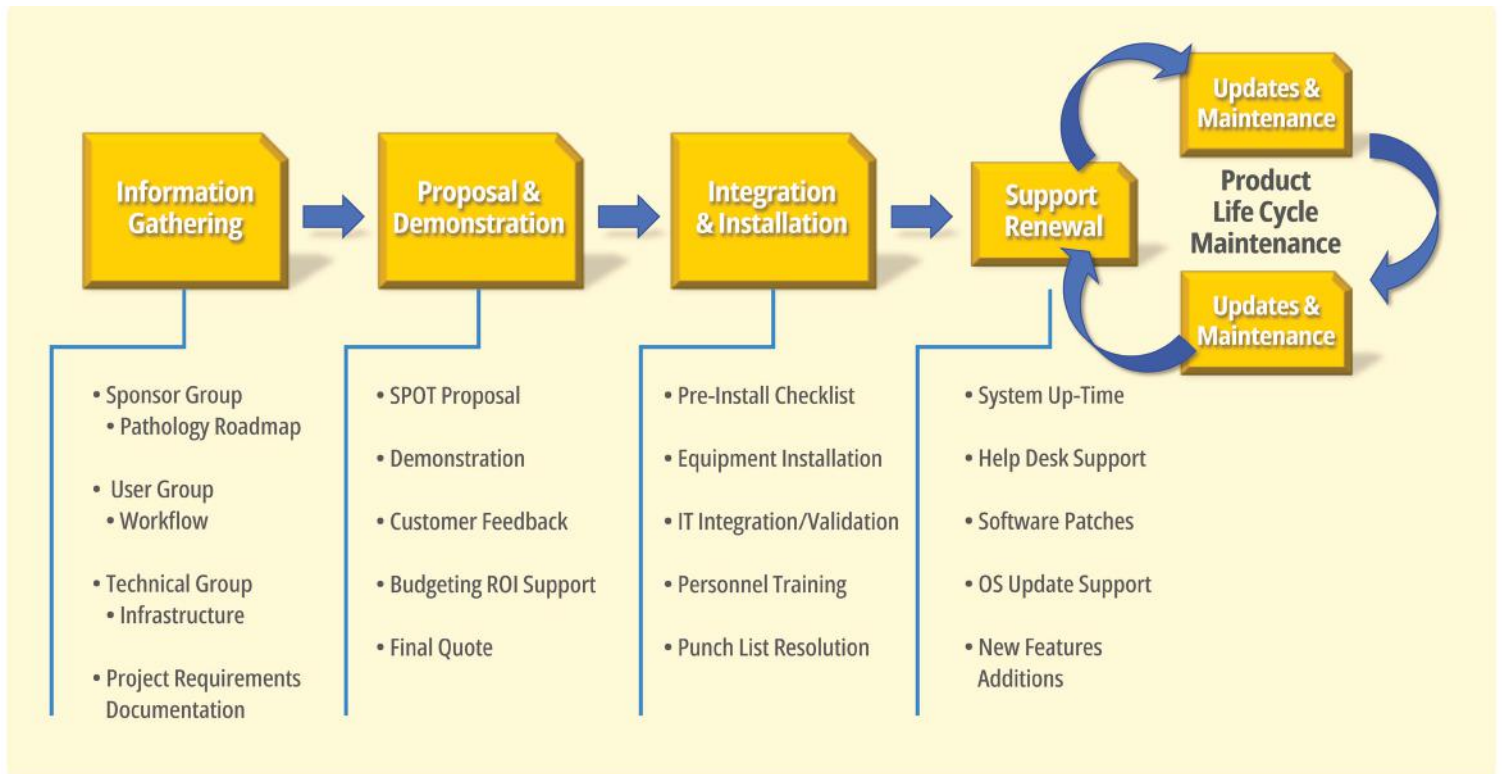
PathTracker is a practical and affordable management system for your slide and cassette archive. First, it saves time scanning your cassettes and slides into the archive system. Next it saves money with the ability to use standard cassettes storage drawers rather than expensive proprietary storage drawers that will be archived for years to come. When you need a cassette or slide, PathTracker provides an easy to use search interface that provides the location of the sample for retrieval and then tracks the location of the loan and when its due back. When it's time to return the block or slide, PathTracker eliminates the refiling fees. Simply add the slide or cassette to the next storage container and PathTracker logs it in, updates the database and tracks its new location.



Backed Up and Available Network Wide

PathTracker is configurable to be a stand-alone instrument or a networked resource that utilizes the IT infrastructure. As a network device, PathTracker supports a centralized database for tracking sample assets from multiple terminals across your network. This ensures data backup security as well as remote access from any PathSuite system in the network. Automated archive maintenance is configurable with settings for storage duration on screen images, scannable images, tracking data and long term sample transaction data. PathTracker is an integrated pathology data solution.

Implementation Is Easy...



PathTracker™ | Software

Make Bulk Scanning Easy

PathTracker performs its scanning by imaging your bulk sample container, scanning the field for barcodes, and recording the barcodes to the PathTracker and LIS database archives.

Critically, PathTracker's visual interfaces shows you an image of the scanned samples with all the scanned barcodes marked. Unscanned cassettes are easily identified and quickly addressed using PathTracker's correction tools ensuring your production run continues with its processing. During reconciliation scans, immediate notification is provided for missing samples ensuring issues are addressed in timely fashion.

Once a scan is approved, PathTracker transfers the scan data to the PathTracker database as well as to your LIS barcode tracking system.

PathTracker is Fast, Easy and Accurate!

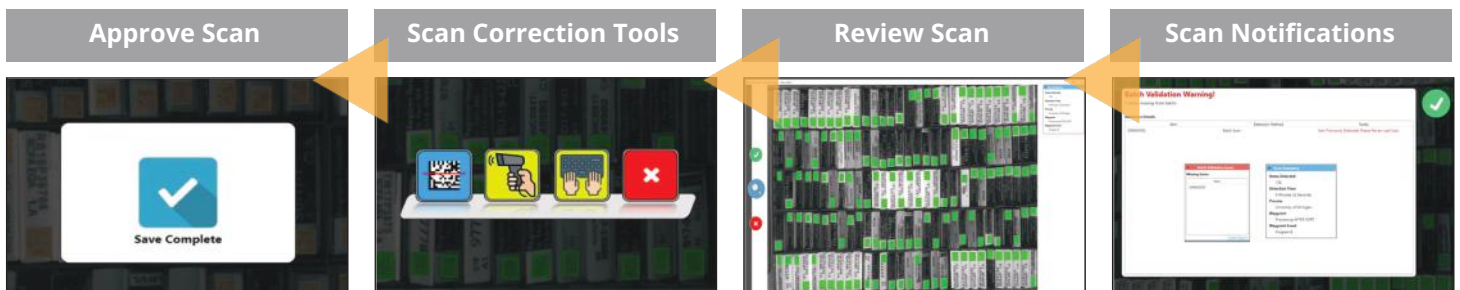


Align your container to the field of view and you're ready to scan.

Select the process step location, such as Hospital Grossing Room or Processor Retort #.

Add a way point attribute such as processor program or courier method.

Click the start button and PathTracker's patented technology finds and marks the barcodes in its field of view.



Upon operator approval, the data set and reference image are automatically stored to the PathTracker database and posted to the LIS tracking system.

PathTracker provides correction tools to ensure your workflow continues to completion while printing issues are addressed.

A quick review of the marked barcodes quickly brings to light any contaminated, damaged or poorly printed barcodes.

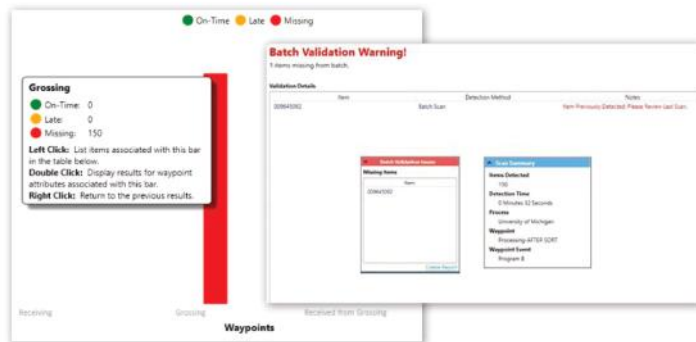
PathTracker Provides immediate notification of missing samples during reconciliation scans as well as a status dashboard for all samples across your workflow.

PathTracker™ Posts Scan Results to Your LIS

PathTracker provides automatic posting of sample barcode scans to your LIS via HL7 Message or REST-API / Web Service interfaces. This ensures that PathTracker is keeping your LIS Barcode tracking system updated with the latest locations of each and every sample. Contact your SPOT Imaging representative for the availability and requirements for your LIS tracking software.

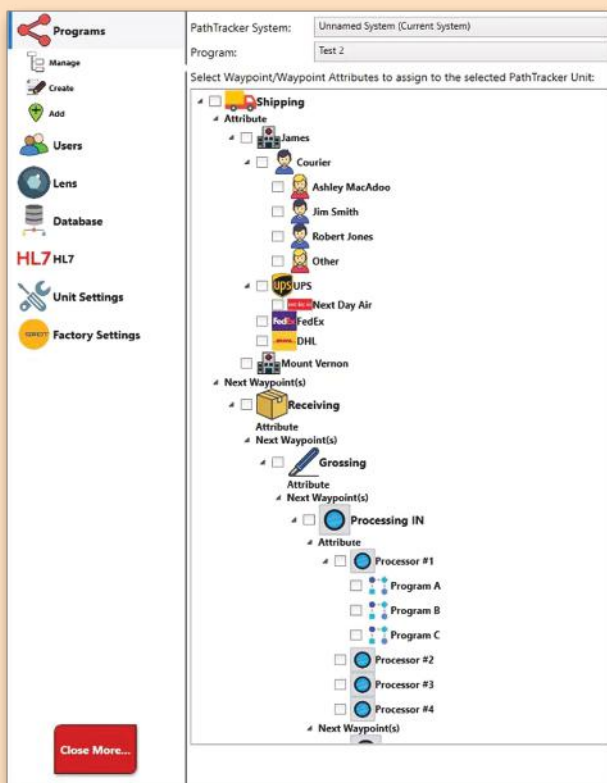
Late & Missing Sample Warnings

PathTracker provides missing sample alerts for direct shipping transfers. Checkpoints that have resorting or splitting of the container batch are monitored with transit timers providing late or missing alerts.



Workflow Modeler

The PathTracker Workflow Modeler maps your institution's Histology processing steps from sample container printing at outlying hospitals through "in lab" tasks and ending with the sample filing room. Once mapped, any step can be easily activated as a tracking waypoint with the click of a check box and items added to record attributes such as operator, courier used, or processor program run expanding the data recorded as needed.



Sample Tracking Management Tools

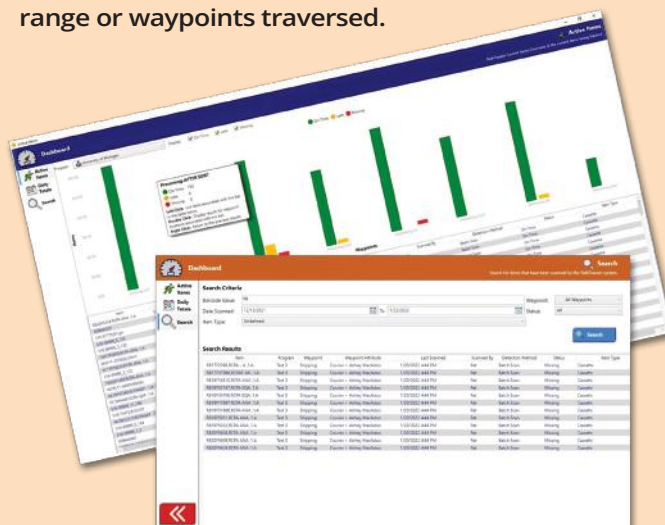
PathTracker includes a Workflow Dashboard and Report Generator. These tools allow operators to monitor the overall workflow as well as track individual samples as necessary. The report generator tools enable:

A visual overview of the sample load across the workflow

Searches for the current status as well as tracking history of individual samples

Data drill down on a particular waypoint or cohort of samples for workload analysis

Reporting based on search criteria such as scan date range or waypoints traversed.



PathTracker™ Key Value Generating Features

Return on Your Investment... Fast Scans Save Time and Money...



**Save Time
and Money**



For 120,000
Cassettes



SAVE:
567 EFT Hours¹
Save \$34,000³

For 600,000
Slides



SAVE:
333 EFT Hours²
Save \$20,000³

PathTracker Return on investment starts with providing fast scans that allow operators to complete all their check out or check in scans in the time they would have spent checking only 1 bulk container. This savings can free up your personnel to perform more meaningful work, and eliminate overtime.

Secondly, PathTracker is so easy to use that it eliminates the common lab practice of having "The Person" who is qualified careful enough to perform the bulk scanning for the lab. PathTracker is one more step on your journey to lab efficiency and sample accountability.

Reduce Errors and Speed Work

PathTracker Leverages Simple Facts:

Fact 1: There is a baseline human error rate. The reduction of manual operations reduces errors...

PathTracker bulk scanning reduces error frequency by:

- A factor of 150:1 for cassettes
- A factor of 20:1 for slides

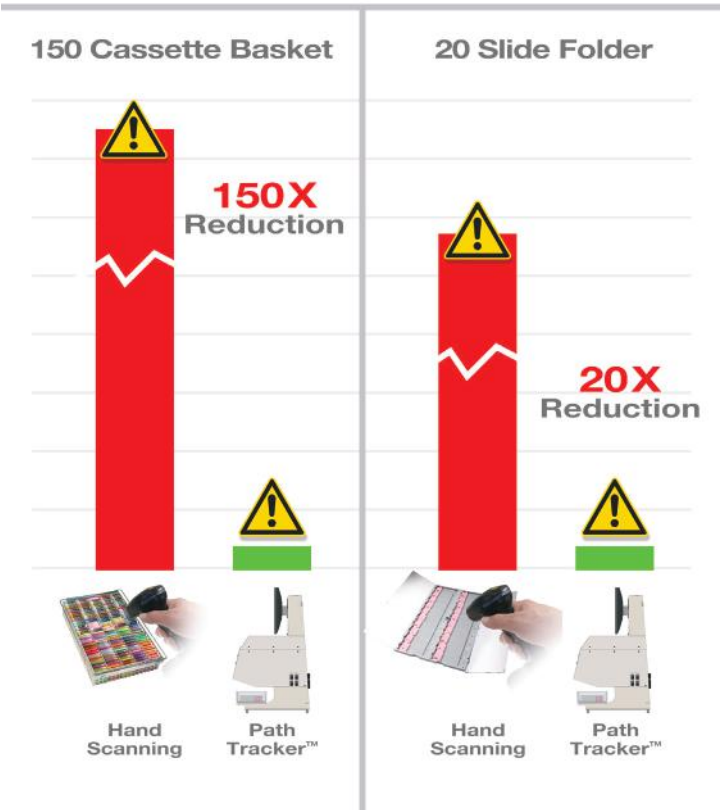
Fact 2: Human operators can identify errors more easily and quickly in a graphical presentation verses a textual list of codes...

- PathTracker presents its scan results in a visual presentation with markers to indicate recorded barcodes and barcodes to be corrected.
- If a scanning error does happen, it can be quickly identified and addressed without having to rescan all the samples in a container, saving time and keeping your team on schedule.

Fact 3: The sooner a sample is flagged as late or missing, the more limited the search area will be..

- PathTracker provides notification of missing or late samples quickly, in process, bringing to attention errant sample container as they occur rather than days later at the end of the process.
- When a sample is lost It is easy to find with PathTracker's scan attributes that quickly identify operator, courier name, processor used and processor program.

Reduce Human Error



1 - Carraro P, Plebani M. Errors in stat laboratory: types and frequencies 10 years later. Clin Chem 207; 53: 1338-42.

2 - Effectiveness of Barcode Tracking in Documenting Errors & Preventing Patient Specimen Identification Incidents in Anatomical Pathology Laboratory, Dr .K.C. Lee, Department of Pathology Princess Margaret Hospital, 15 May 2013 PPT

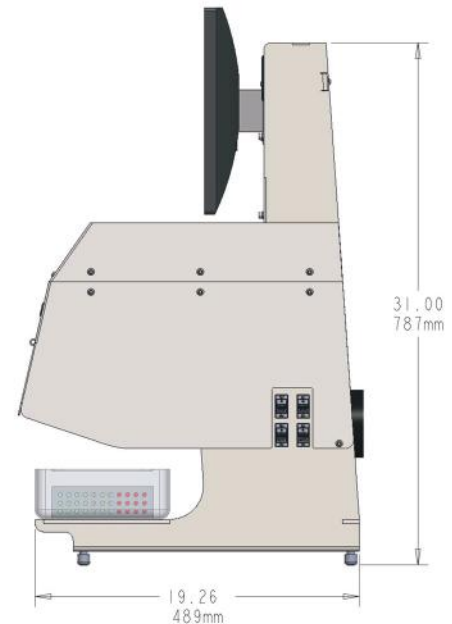
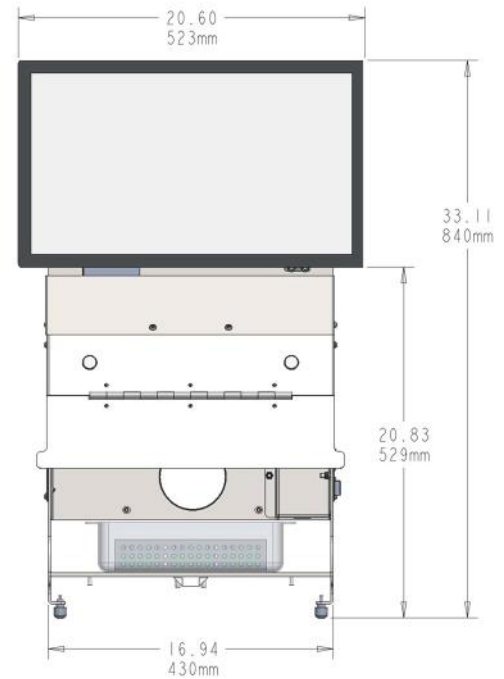
3 - Based on 3 seconds per scan, 6 scanning way points

PathTracker™ | Hardware

Specifications

Specifications	Metric	SAE
Computer OS	Win 10 Pro	Win 10 Pro
USB 3.0 Ports	4	4
LAN Port	1 GigaBit Cat5	1 GigaBit Cat5
Washable Keyboard and Mouse	(Standard)	(Standard)
Hand Held Barcode Reader	(Standard)	(Standard)
Display		
Touch Screen	Standard	Standard
Size (diagonal)	54.5 cm	21.5"
Resolution	1920 x 1080	1920 x 1080
Sample Capacity		
Maximum Cassette FOV (HxV)	22.9 x 15.3 cm	9.0" x 6.0"
Maximum Number of Cassettes	150	150
Maximum Microscope FOV (HxV)	34.3 x 22.9 cm	13.5" x 9.0"
Maximum Number of Slides	20	20
Maximum Container Height	14.0 cm	5.5"
Instrument Size		
Height	81.3 cm	32.0"
Width	52.3 cm	20.6"
Depth	61.0 cm	24.0"
Weight		
Instrument	38.2 Kgs	84 lbs
Shipping	88.4 Kgs	195 lbs
Ventilation Coupling		
Diameter	10.2 cm	4"
Height from Table Top	21.3 cm	8.4"
Weight	38.21 kgs	84.25 lbs
Power		
Input	AC100 ~240V 6A 50/60Hz	
Fuse	8 AMP / 240V Slow Blow, 5x20mm	
Operation Temperature	0-40°C or 32°-104° F	
Caution	For indoor use only. For use with Diagnostic Instruments, Inc. PathTracker Software only.	
Certifications	CE, FCC Class A, RoHS	

Dimensions



SPOT PathSuite™ Integrated Imaging Environment

Clinical Team Needs:

Team Collaboration

Streamlined Workflows

Clear Professional Presentations

Support of Existing Infrastructure

Easy to Budget

Stepwise Implementation

PathSuite Provides:

Central Archive and Telepathology Links

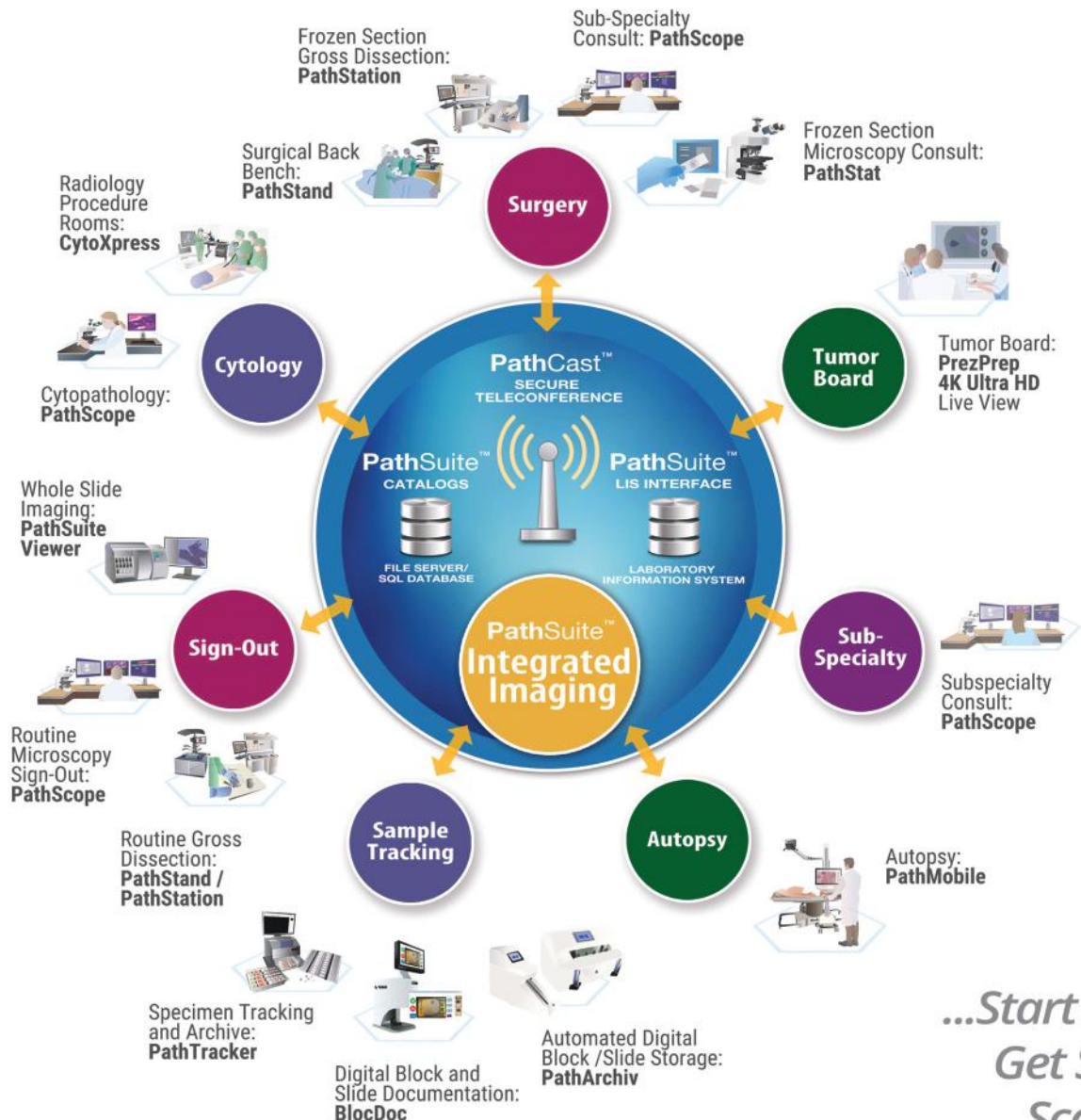
Purpose Designed Hardware and Software

Great Images, Clean Layouts

Configurable Hardware and Software

Budget Positive ROI's

Expandable, Interconnected, Modular Solutions



*...Start Small,
Get Smart,
Scale Up!*