

The Standard for Pathology Imaging

Helping pathology partners develop roadmaps

- Professional images from streamlined workflows
- Shared central image archive
- Secure telepathology interface
- Synchronized LIS connectivity

Based on the principles of:

- Practical, budget positive solutions that pay for themselves
- Integrated, stepwise implementation
- Fitting your existing infrastructure of equipment and software
- Solid performance 55+ years of problem-solving experience



SPOT Imaging Partner Sampling



QR to SPOT products



6540 Burroughs Avenue • Sterling Heights • MI • 48314-2133
586.731.6000 • toll free (US) 1-866-604-SPOT • spotimaging.com • info@spotimaging.com



Empowering Digital Pathology Workflows






SAMPLE TRACKING

MICROSCOPY IMAGING

GROSS IMAGING

IMAGE MANAGEMENT AND ARCHIVE

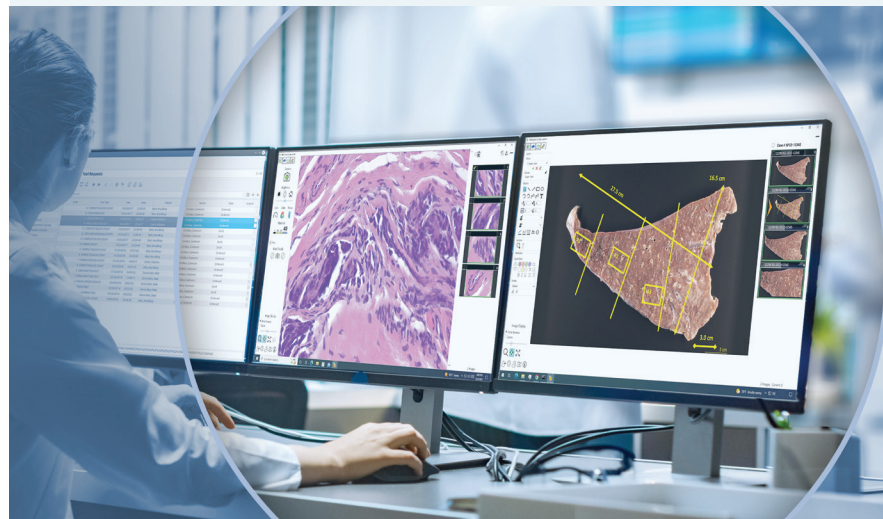
PathSuite™ | Imaging

-  Streamlined case-based pathology workflow
-  Live preview and telepathology with image autosave
-  Essential annotation and measurement tools

PathSuite™ Enterprise

Full-institution image management solution

LIS barcode synchronized case management

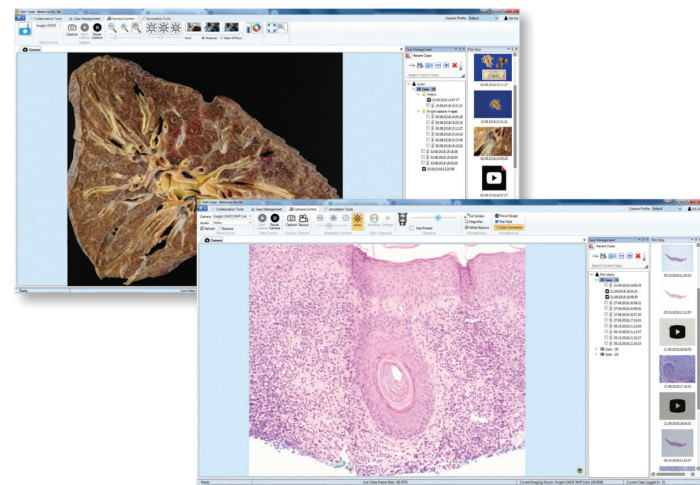


PathSuite Enterprise: The Pathology Cockpit

The Pathology Cockpit is designed to serve the pathologist with all the case data, image studies and analyses in one location, streamlining the workflow and enhancing diagnostic certainty. **PathSuite Enterprise** synchronizes with the LIS and provides a single-viewer for all image studies.

One Interface, Multiple Imaging Modalities

PathSuite is one of the few imaging solutions that supports the non-WSI imaging modalities. Its combination of native, TWAIN and import interfaces enables **PathSuite** to address grossing, microscopy, electron microscopy, IHC imaging modalities. And with **PathSuite's** continued development, the list of supported imaging studies will grow to include WSI, video and radiology.



PathArchiv™ | Sample Tracking

Automated File Room Block and Slide Storage Systems

PathArchiv automates the recording, filing and loans of blocks and slides, dramatically reducing lost samples as well as the staffing required to manage the file room.



PathArchiv-S Slide Filing Station



- » The **PathArchiv-S** (slide filing) workflow starts with the loading of up to 5 labeled slide magazines.
- » Up to 200 slides collected from the case-manifest folders are loaded into the input slots.
- » Each slide is picked up, the label scanned, and the slide put into a magazine. An image of the barcode label, its identifier and its position in the magazine are recorded into the **PathArchiv** database.
- » Scanned magazines are then loaded into labeled storage boxes, which are placed on the storage shelving.

SPOTArchiv Key Features

- Automatically records barcode and storage location of samples
- Reduces file room staffing by 2 to 4x
- Reduces storage space requirements by 30%
- Reduces consumables by 30%
- Manages sample loans and collections
- Storage format fits industry-standard 12" x 12" x 4" shelving



- » The **PathArchiv-B** (block filing) workflow starts at microtomy, where the blocks are placed into the standard format block magazines that hold 50 standard blocks (2 rows of 25).
- » The magazine is then loaded into the **PathArchiv-B**, which reads the magazine identifier, each cassette's barcode and its position. This data is recorded into the **PathArchiv** database.
- » Scanned magazines are then loaded into labeled storage boxes, which are placed on the storage shelving.



PathArchiv-B Block Filing Station

PathTracker™ | Sample Tracking

Bulk Barcode Reader

PathTracker is a practical and affordable management system for your slide and cassette archive. First, it saves time scanning your cassettes and slides into the archive system.



SPOT PathTracker Key Features

- Saves time and operator strain
- Reads 150 cassettes in as little as 9 seconds
- Reads cassettes, slides, vials, wallplates—any barcoded sample
- Reads any storage container or basket that can be imaged
- Detects missing and late samples
- Uploads data to LIS

US Patent: US 11,054,431 B2 with International Patents Pending

BlocDoc™ | Sample Imaging

Block and Slide Macro Image Documentation System

BlocDoc meets accreditation checklist requirements by providing pathologists digital reference images of the cut block and raw slides at the time of slide examination (glass or WSI).






SPOT BlocDoc Key Features

- 2 second operation
- Auto reads barcodes and auto-files images
- Provides enhanced cut tissue surface view
- Supports standard and whole mount sample formats
- Supports block and slide documentation

US Patent: US 11,257,216 B2 with International Patents Pending

Solutions for Pathology

-  Supports SPOT and third-party cameras
-  Supports multiple imaging modalities
-  Two configurations – **PathSuite Professional** and **PathSuite Enterprise**

Case metadata auto-fill

SQL-Filestream database image archive

Extensive IT management tools and architecture



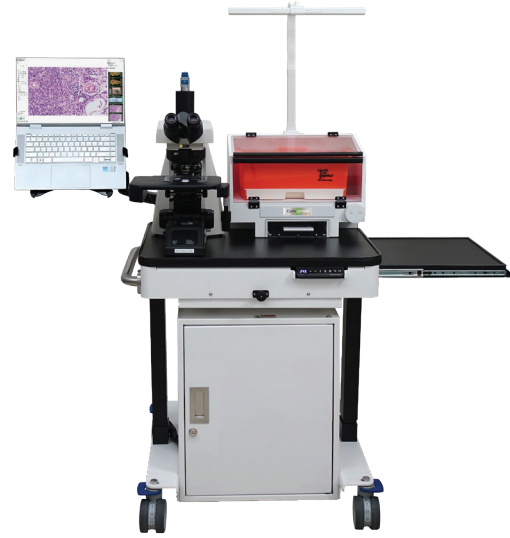
Increased Productivity and Streamlined Workflows

Whether you are using Professional or Enterprise, PathSuite is designed to eliminate unnecessary steps, while providing the essential tools needed to get your job done. Log into your case, view existing images, preview and compose new images, measure, annotate and rest-assured that all data is securely stored. PathSuite consolidates several workflows into one.

Complete Institutional Architecture

Supporting clients across a network is a big job that requires the right tools. PathSuite Enterprise provides tools for: data migration, integration validation, license management, user and group privileges, LDAP-S authentication, LIS data linking, data edit logs, PHI data flags.





CytoXpress™

Tele-consult solutions for ROSE and frozen section workflows

CytoXpress lets your Cytotechnologist transmit a live image stream directly to your computer—when the sample is ready! In the meantime, you can continue with your normal sign-out and go home on-time.

SPOT CytoXpress Key Features

- Applications: ROSE and frozen tele-consult
- Manual or remote-control microscope
- Adjustable height table
- Computer mount
- Formalin & pathogen abatement hood
- Battery or plug-in operation
- Powered by PathSuite Professional Software

SPOT PathScope Key Features

- On-Scope Controls
- Pathology Interface
- Great Images
- Parfocal with Eyepieces
- Auto-calibration
- Powered by PathSuite Professional Software

PathScope™

Telepathology and image archiving for pathology

Optimized for routine anatomic pathology to eliminate imaging time and ease telepathology consults.



Digital Microscopy Cameras



SPOT Idea Key Features

Entry level, brightfield, still image documentation cameras.

- Application: still brightfield image capture
- 3.0 & 5.0 Mp color resolution
- ICC correct color technology
- USB 2.0 computer interface

SPOT Insight Key Features

Productivity optimized, multi-application cameras that support live tele-consults, tumor board presentations, brightfield and fluorescence imaging.

- Applications: live video tele-consult/still image
- Brightfield & fluorescence imaging
- 5.0 & 12.0 Mp color resolution
- Live 4K UHD & 1080p HD
- ICC correct color technology
- USB 3.0 computer interface

SPOT RT3 Key Features

Research grade, low light fluorescence monochrome imaging cameras.

- Application: live and captured low light fluorescence
- 5.0 Mp monochrome resolution
- USB 3.0 computer interface



PathStation™

In-hood gross dissection documentation solutions with tele-consult support

The PathStation macro digital imaging system makes it easy to capture, annotate, measure, share, and save high quality images of gross specimens in the frozen section room.

SPOT PathStation Key Features

- Live preview 4K UHD or 720p HD
- Captured image 4K UHD or 20 Mp
- 20x or 8.33x optical zoom
- Sealed protective housing
- Bracketing to fit your gross station or wall
- Powered by PathSuite Professional Software

PathStand™

Stand alone gross dissection documentation solution with tele-consult support

The PathStand is a complete macro digital imaging system that includes everything you need to capture and share crisp, detailed pictures of gross pathology specimens for frozen section consults, documentation, and reports.



SPOT PathStand Key Features

- Live preview 4K UHD or 720p HD
- Captured image 4K UHD or 20 Mp
- 20x or 8.33x optical zoom
- Sealed protective housing
- LED lighting, solid and glass background
- Ergonomic computer and keyboard mounting
- Powered by PathSuite Professional Software



PathMobile™

Cordless autopsy floor stand

Finally there is an imaging platform that provides all the positioning freedom you need to get full-body and close-up shots, from nearly any angle. For this reason, the PathMobile autopsy imaging system makes professional, legal-quality images easy and secure.

SPOT PathMobile Key Features

- Live preview 4K UHD or 720p HD
- Captured image 4K UHD or 20 Mp
- 20x or 8.33x optical zoom
- Sealed Protective Housing
- Arm Display
- Wireless remote-control foot pedal and mouse
- Powered by PathSuite Professional Software